

**AUT**

TE WĀNANGA ARONUI  
O TĀMAKI MAKĀU RAU

# PROSPECTUS

## 2025



**TOP 50**  
WORLDWIDE  
Young University

**AUCKLAND**  
**UNIVERSITY**  
**OF TECHNOLOGY**



TOP  1%  
UNIVERSITIES  
WORLDWIDE

#1  
IN NEW ZEALAND FOR  
INTERNATIONAL  
OUTLOOK

**Cover:** Top 50 Worldwide Young University: AUT is ranked 41st in the world based on the quality of our teaching, research, citations, international outlook and industry income (Times Higher Education World University Rankings).

**Disclaimer:** Although every reasonable effort is made to ensure accuracy, the information in this document is provided as a general guide only for students and is subject to change. All students enrolling at AUT should consult its official document, the AUT Calendar, which is available online at [aut.ac.nz/calendar](http://aut.ac.nz/calendar), to ensure that they are aware of, and comply with, all regulations, requirements and policies. The information contained in this Prospectus was correct at the time of print, January 2024.

About AUT	06		
Architecture & Built Environment	18	Art & Design	22
		Business	26
Communication Studies	32	Creative Technologies	36
		Education	40
Engineering, Computer & Mathematical Sciences	44	Health Sciences	50
		Hospitality, Tourism & Events	56
Language & Culture	62	Law	66
		Māori & Indigenous Development	70
Science	74	Social Sciences & Public Policy	78
		Sport & Recreation	82
Applying to AUT	86		

## Nau mai, haere mai ki AUT WELCOME TO AUT

**E ngā mana, e ngā reo**

To the prestigious, the many voices

**E te iti, e te rahi**

The few, the great

**E ngā mātāwaka o ngā tōpito o te ao**

To those of all races and creeds

**Ngā mahuetanga iho e kawē nei i ngā**

We who remain to fulfil the dreams and aspirations of the ancestors

**moemoeā o rātou mā**

Greetings one and all

**Tēnā koutou katoa**

**Piki mai rā, kake mai rā,**

Climb, ascend

**Nau mai, haere mai ki tēnei o ngā wānanga**

Embark on the journey of knowledge

**Whakatau mai i raro i te korowai āhuru**

Let us at AUT embrace and empower you

**o Te Wānanga**

To strive for and achieve excellence

**Aronui o Tāmaki Makau Rau**

**Te whakatupu i te kōunga, i te mana taurite me ngā**

**tikanga matatika, i ngā pūkenga ako,**

**i ngā pūkenga whakaako me te āta rangahau hei hāpai**

**i ngā hāpori whānui o te motu, otirā, o te ao.**

To foster excellence, equity and ethics in learning, teaching, research and scholarship, and in so doing serve our regional, national and international communities.



## Nau mai ki te Wānanga Aronui o Tāmaki Makau Rau

Welcome to Auckland University of Technology

We are Aotearoa New Zealand's most welcoming and diverse university, where talent meets opportunity and where students learn, research and live in one of the world's most dynamic and culturally rich cities.

At AUT, our mission is to create great graduates. Our students learn in an engaging environment that encourages them to participate and develop their own views, to challenge and be challenged, to learn deeply and apply their knowledge in real situations. Students are connected to industry and business through work placements, internships and entrepreneurial programmes, and engage with the community through volunteering and leadership initiatives.

We are one of the world's leading universities. We are New Zealand's only university of technology and the only New Zealand university ranked both among the top 1% of universities in the world and in the top 50 universities under 50 years of age. We are ranked first in New Zealand for international outlook, with 150,000 alumni worldwide, and provide exceptional learning experiences in state-of-the-art facilities guided by world-class academics and support staff.

We offer over 250 undergraduate and postgraduate programmes across our three modern campuses and specialist locations, making AUT one of the largest universities in New Zealand.

Many of our subject areas are world-ranked, and our graduates are highly employable nationally and internationally. Our global network of industry and tertiary partners provides opportunities to broaden the student experience further.

We are committed to building a culture of open-mindedness, curiosity and questioning where our researchers and students think critically, listen carefully, and speak courageously. At AUT we believe deeply that education is transformative to the lives of not only learners and graduates, but also for the network of people and communities they are connected to.

Our prospectus describes the AUT student experience in the words of the people who know it best – our students, past and present, from all around the world. However, a prospectus can only go so far, and the best way for you to gain insight into life at AUT is to visit us and experience it for yourself.

We look forward to welcoming you to our university and helping you find your greatness at AUT.

Professor Damon Salesa  
Vice-Chancellor  
Auckland University of Technology

Our Māori name, Te Wānanga Aronui O Tāmaki Makau Rau, reflects our mission and purpose. **Tāmaki Makau Rau** acknowledges our long history and connection to Auckland and its people; **Wānanga** is the opportunity to gather, persevere and venture into new learning spaces; **Aronui** refers to deepening our knowledge and understanding and references one of the three baskets of knowledge in Māori lore – Te Kete Aronui. The knowledge attained in this basket centres around the human experience of discovery, technology and innovation and the transformative power of education and research.

Therefore, **Te Wānanga Aronui o Tāmaki Makau Rau** refers to a place that celebrates the pursuit of knowledge and embraces new realisations that reflect our world, which is meaningful, impactful, and transformative for collective wellbeing and advancement.

**TOP  
RATED  
FOR  
ACADEMIC  
TEACHING**



CHOOSE FROM OVER

**250**

COURSES OF STUDY



60+ research centres and institutes with world-class expertise



**27,000**  
STUDENTS



**QS STARS 2023-25**

For Employability,  
Environmental Impact,  
Facilities, Internationalisation,  
Research & Teaching



**150,000+**  
alumni



“Everyone knows that AUT is one of the best universities in New Zealand; famous for its dynamic study atmosphere. In this ever-changing world, choosing a university that owns its unique modern and innovative spirit is always the right choice. AUT offers innovation, good academic staff and great facilities; offering students a smooth and pleasant university journey.”

**Mengqiao (Mina) Wu**  
Master of Construction Management

“A great part of studying at AUT is the workplace experience you can get involved in. For me, this was important when deciding where I wanted to study as I figured it would give me the opportunity to put my learning into practice and get a glimpse into working life. This was one of many reasons why AUT was my university of choice.”

**Lilli Ford**  
Bachelor of Arts in Psychology

“I chose AUT because of the quality of the research that is being put out by the researchers here. I wanted to be a part of such a distinct team and learn from them as much as I could.

All my colleagues are extremely passionate and knowledgeable about their topics, and it’s a great feeling to be around them.”

**Tanuj Wadhi**  
Doctor of Philosophy – Sport and Recreation

“AUT has always been a place where students can walk in feeling welcomed and part of a culture that strives for success. It has a great track record of preparing students for their future, and the opportunities given to students are evident in the success of past students.”

**Kelepi Liava’a**  
Bachelor of Business in Human Resource Management and Employment Relations with a minor in Marketing  
Diploma in Business

“I’d recommend AUT to everyone – it’s a great place to study, acknowledges people’s culture and values, and the support here is the best. I love the fact that everyone is very welcoming, and the lecturers at AUT are always willing to help, whether or not it involves study.”

**Kasidy Wipani**  
Samoan, Ngāti Kahungunu ki Wairarapa, Ngāti Tuwharetoa, Ngāti Porou  
Bachelor of Arts in Education with a minor in Health Promotion  
Diploma in Arts

“My AUT degree has set me up for my successful career in the business world. When considering my options for tertiary education, I was drawn to AUT due to its reputation for providing a personalised and collaborative learning experience. The smaller class sizes at AUT allowed for more individual attention from lecturers, and my final-year workplace experience was a game-changer for me.”

**Kayne Bell**  
Bachelor of Business in Marketing and Event Management

# He aha ai e ako ki AUT? WHY STUDY AT AUT?

## New Zealand's leading modern university

AUT is one of the world's best modern universities. We're one of the largest universities in Aotearoa New Zealand and the fastest growing postgraduate study destination, with 250 programmes and more than 150,000 alumni all over the world.

Study with us and you'll join New Zealand's most diverse and vibrant university, and develop the skills for rewarding careers in a wide range of industries and professions. Our courses encourage innovation and entrepreneurship, and the ability to explore new technologies, challenge routine thinking and make a positive difference.

AUT is where talent meets opportunity, and we're proud of the success of our students, in Aotearoa and around the world.

## Preparing you for a bright future

With an AUT degree you'll graduate with a qualification that is widely regarded, and with valuable experiences and industry connections for your future. Times Higher Education has ranked us in the top 1% of universities in the world, the top 50 universities under 50 years of age, the top 5% of universities for social impact, and first in New Zealand for international outlook.

We're connected to an extraordinary range of organisations, and as part of your studies you could work with one of our industry partners. You learn from academic staff who are still actively involved in their professional fields, and we often invite industry experts to come in and share their knowledge with you. Many programmes also include workplace experience where you get real-life experience and important industry contacts before you even graduate.

With some of our bachelor's degrees you can even tailor your studies to your interests and include subjects from across AUT; meaning your degree can be as unique as you are. And if you want another way into AUT, our diploma programmes are a great way to start your studies and gain the confidence to succeed at university.



## Research that shapes tomorrow

Our research is focused on real-world impact, and we're proud of our reputation as a leading research university.

As an AUT student you could learn from globally renowned researchers who are experts in their fields. Their research often feeds back into the classroom, and you may even be able to contribute to these research projects.

We have more than 60 research centres and institutes delivering innovative research - from artificial intelligence and robotics to ecology and public health.

Our research addresses issues facing the environment, society and the world, and our discoveries are widely used, both in Aotearoa and around the world.

## Top facilities and equipment

To make sure your learning is relevant to your future career, you have access to top facilities and industry-standard equipment, including one of only a handful of motion capture studios in the country and New Zealand's top sport science facility, AUT Millennium.

Our three university campuses feature modern buildings that don't just win architecture awards but also offer excellent environments where you can gain practical experience, collaborate with your classmates and develop skills that help you stand out to employers.

We're proud of our five-star ranking for teaching and facilities, awarded by the world university rankings organisation QS. Our state-of-the-art buildings were created using sustainable principles and offer inviting lecture theatres, auditoriums and research spaces; offering you the perfect university environment for your studies.



# Oranga Taurira STUDENT LIFE

AUT is a modern and innovative university with endless opportunities, and a supportive culture that celebrates diversity and is committed to improving our local and global communities.

Our students are at the heart of everything we do, and we're proactive in enabling them to succeed and be ready for any challenge in front of them. We work alongside them to design and deliver comprehensive student support services and opportunities – to enable them to build meaningful friendships and connections, develop life skills, achieve academically and have amazing experiences inside and outside the classroom.

At AUT you're not just a number; we value every student that comes through our doors, be it physically or virtually.

"As soon as I arrived at the AUT open day, I felt a sense of belonging. Everyone I met was really down-to-earth and super friendly, so I jumped straight into the opportunity they offered me. At AUT, it's not all just about finishing your degree; you can have fun while you're doing it."

**Caprice Thomas**

Tuhoe, Ngāpuhi, Fiji, Samoa  
Bachelor of Business in Finance  
Diploma in Business

## Our Student Hubs – your place to get the support you need

AUT offers some of the most comprehensive student support services in New Zealand, and our Student Hub is where you can learn more about these services. Our Student Hubs are available both online and across our campuses, so you can get help and support when and where you need it. Our professionally qualified staff include social workers and occupational therapists who support our diverse student community. The Student Hub helps you navigate all the opportunities available to you, and provides you with the support to succeed, from when you apply to after you graduate.

## The best start for your uni journey

Studying at university is exciting and can be quite an adjustment. Our specialist advisors are in touch and available throughout your applicant journey to help you navigate the process from application to becoming a new student. We also help new students transition to university life by delivering a wide-ranging orientation programme at the start of each semester. Orientation is complemented by a fun social programme to help you meet new friends, network and celebrate the new journey you're on. You'll be connected to our student ambassadors and navigators



who are senior students at AUT – and were in your shoes not too long ago. Orientation is just one aspect; we also offer activities throughout the semester to transition you into university life. To help you find your way through your student journey, AUT's app also provides up-to-date news, events, and information about AUT anytime, anywhere.

"The student ambassadors were the first people I met when I arrived at AUT. They were students who volunteered to help new students settle in and prepare them for their university journey. This made my first day at university less anxious and more exciting."

**Toetu Fatu Lafoai**

Master of Analytics  
Bachelor of Science in Applied Mathematics  
and Computer Science

## Everything you need to achieve your academic goals

At AUT, we do everything we can to support you to achieve your academic goals and set you up for a successful career. You'll have access to all the people, resources and technology you need to make the most of your learning opportunities.

- **Learning support:** Our librarians, learning advisors and tools like Studiosity are here to help you ace your assessments. You'll have easy access to writing, research, notetaking, exam and reading skills support through assessment advice appointments and workshops provided by Te Mātāpuna Library & Learning Services.

- **Childcare:** We have a childcare centre at the North Campus for student parents, and private rooms for breastfeeding at all three campuses. You can also bring your children to dedicated mātua/parents' rooms at the City and North Campus libraries, so you can study while your children play.
- **Free technology access:** Access to computer labs, laptops, printers, IT support, free wifi on campus, the full Microsoft 365 suite and LinkedIn Learning, and remote access to AUT computers to use specialist software unavailable on personal devices.
- **Financial assistance:** Get support with food or transport vouchers, rent and living expenses, and laptops and data packages if you're experiencing financial difficulty.
- **Graduate Research School:** Postgraduate students can access support services from applications through to graduation, and dedicated staff to support you throughout your studies.
- **Vibrant research culture:** Enjoy the many opportunities to collaborate, connect, share and celebrate ideas on multiple platforms across AUT.

"As a 'mature' student, I wasn't sure if I was up to the challenge of study at this level. Managing to do better than I thought has improved my confidence. Of course, this wouldn't have been possible without support from lecturers and the support services at AUT, including Studiosity and the library resources."

**Bradley White**

Bachelor of Education (Primary Teaching)







## STUDENT LIFE (continued)

### A home away from home

As a student, you'll spend most of your time with us on campus. We want you and your family to feel comfortable and confident that you're being looked after when you're with us.

- **Accommodation:** Our three student accommodation facilities offer comfortable surroundings, convenience and security, and make it easy to meet lifelong friends through our vibrant residential life programmes. Two of our facilities are near the City Campus, and one is based near our North Campus, with a choice of single studios and shared apartment living.
- **Campuses:** We have three campuses in different parts of Auckland – City, South and North Shore – each offering their own unique vibe, and well connected by shuttle buses (including New Zealand's first electric bus) and public transport.
- **Health and wellbeing:** We actively encourage students to be aware of their wellness needs – mind, body, and spirit. As an AUT student you have access to medical centres on campus, free and confidential counselling sessions, peer support from over 300 student ambassadors, navigators, peer advisors and RUOK advisors, and programmes to develop better self-knowledge and resilience.
- **Practising your faith:** AUT encourages understanding, tolerance and harmony; respecting everyone's spiritual views. You can access our multi-faith and prayer rooms, attend events or get support from our team of chaplains.

- **Speaking your language:** Our students come from 137 countries – some of our bilingual staff at the Student Hub can talk to you in your preferred language. Our counselling service Puāwaitanga also offers sessions in 16 languages, including te reo Māori.
- **Safe and secure campuses:** Safety for students on campus is our priority, and our friendly security staff are available day and night to help.
- **Student ambassadors and navigators:** Our more than 300 student ambassadors and navigators help new students as they settle into their studies and university life.

"I've met some of the best people in my life at AUT. Some of my favourite memories at AUT include sitting with my friends on the 11th floor of the WG building on the City Campus, and enjoying some warm cookies on chilly mornings and yummy ice creams from Refuel café during warm evenings."

**Delicia Saldanha**  
Bachelor of Medical Laboratory Science

### A vibrant uni experience

At AUT, we want you to make the most of university life, and have fun and grow in your time with us. That's why we offer a range of spaces and initiatives for students – and if you can't find something you enjoy, you're always welcome to create something new!

- **Clubs and events:** Choose from a number of student-led social, sustainability, cultural and academic clubs and get involved in events across all campuses.
- **Sport:** Participate in a wide variety of sports, from social on-campus games to elite international competitions. As a part of University Tertiary Sport (UTSNZ) you could even represent AUT against some of the best student athletes in the country.
- **Recreation:** AUT is a leading sports university, with state-of-the-art sports facilities at AUT Millennium, on-campus gyms at every campus, and a swimming pool and courts for tennis, volleyball, basketball and other sports at the South Campus. Our Te Āhuru Recreation Centre at the City Campus is also a great space to connect with friends and follow your interests, from dance, music or gaming to movies, cooking or sports.

"Besides enjoying the academic side, the extracurricular side of getting involved with AUT life has been amazing! I've joined many clubs, have founded my own club, have taken up numerous leadership positions and have participated in all the free and fun events AUT puts on."

**Viola Ember**  
Bachelor of International Hospitality Management in Accommodation and Event Management

### Specialised support for all of our student communities

AUT celebrates diversity and our commitment to Te Tiriti o Waitangi with passion, curiosity and pride. We have a strong commitment to Māori and Pacific community advancement, and have dedicated teams to support all students at AUT. We were the first university in New Zealand to appoint a full-time rainbow community coordinator to provide dedicated support for rainbow students, and the first New Zealand university to achieve the Rainbow Tick. We're also strongly committed to equity of access and opportunity for students, staff and visitors, and support the principles of Kia Ōrite: Code of Practice for an inclusive tertiary environment.

- **Rainbow community:** Our dedicated rainbow room is a great place to study, connect and meet as a group, or you can access support, resources and services tailored to meet your needs.
- **Māori advancement:** AUT values all ākonga Māori and their whānau, and we're committed to promoting Māori presence and involvement in university life. Our dedicated Pou Āwhina advisors connect ākonga to study and cultural spaces, student groups, Pou Manawa (resourced whānau spaces) and kaupapa Māori events, and can help with anything from personal to cultural or wellbeing needs.



## STUDENT LIFE (continued)

- **Pacific communities:** Our Pacific student wellbeing and success team offers guidance and advice to help you navigate your university journey. We offer a holistic Pasifika approach to support you in your studies, so that you can stay the course and cross the stage at graduation. Visit our Vā Pasifika space at each campus, connect with our Pacific student success consultants and our team of navigators (Pacific student mentors), and join our social events.
- **Disability support:** Our Disability Support team works with students before they start at AUT to help identify their specific needs and continue working with them to ensure they're set up for success. We offer sign language interpreters, notetakers, provision and training in using adaptive technology, and support for students with learning differences.
- **High performance athlete support:** We help our high performance student athletes combine their sporting goals with their education, career and other life aspirations to encourage them to succeed both on and off the sporting stage.
- **International support:** From bilingual staff at the Student Hub who may speak your language to a specialist team that works across time zones, we make sure you feel at home in New Zealand. You can also seek advice and support from a licensed immigration advisor on student visas and other relevant immigration matters.
- **Representing your interests:** The AUT Student Association (AUTSA) advocates and represents the interests of all AUT students, and shares students' voices through its Debate magazine.

"The best part about my studies at AUT was the sense of whānau that is built through Pou Māori – Māori Centre and other parts of the university. Without the support and sense of belonging created through these avenues, my university experience would have been a lot more daunting."

**Sueann Wichman-Yukich**

*Ngāpuhi*

Bachelor of Arts in Māori Development

## Beyond learning and into employability

AUT is proud of creating well-rounded graduates ready to succeed in New Zealand and the world. Our services, competitions and awards offer you enriching life experiences that will support your career once you graduate.

- **Supporting your future career:** Our specialist teams help you be ready for the workforce, from your first day at uni to your first day in your future job. You can access a full programme of employer presentations, events and workshops throughout the year, and we also have four graduate job boards, including international career options, with great work opportunities for AUT graduates and interns.
- **Gain an AUT edge:** The AUT Edge and Beyond AUT Awards help you gain an extra edge in the competitive marketplace by developing sought-after skills through volunteering, leadership, and employability activities.
- **Industry experience:** AUT works directly with industry partners to ensure you get practical workplace experience as part of your qualification.
- **International exchange:** See the world before you graduate by studying overseas as part of your degree. Study for a semester at one of our partner universities around the world, and immerse yourself in another culture, make lifelong friends and get international experience to boost your employability. You continue to pay AUT fees, can cross-credit the points from your overseas studies back to your AUT degree and can continue your studies when you return to New Zealand.
- **Entrepreneurship:** Studying entrepreneurship and innovation is an option for many students. We also run an annual student innovation challenge with cash and other prizes, and AUT Ventures Limited provides funding and mentoring for students who are serious about commercialising AUT research.

"AUT's Employability Lab is one of the must-visit services to improve your CV or get help writing cover letters. Their almost weekly employer information sessions also provide a good opportunity to meet the industry and talk to your future employers."

**Sithum Nanayakkara**

Bachelor of Engineering (Honours)  
in Mechatronics Engineering



# ARCHITECTURE & BUILT ENVIRONMENT

At AUT you learn to design built environments that recognise indigenous values and address Auckland's rapid population growth, as well as global issues like housing affordability, global warming and homelessness. You'll be taught by professional architects, as well as professionals with backgrounds in design, engineering, computer science, creative technologies, media, business and entrepreneurship. You learn in an interactive environment where you collaborate with your classmates, mana whenua and experts from different disciplines to find innovative solutions that support community wellbeing and nurture future generations.



Draws upon global issues, indigenous worldviews and the need for sustainable design



Expert lecturers, nationally and internationally recognised in architecture, design, engineering and more



Students work on live, real industry briefs

Scan this QR code for details about courses, where your study could lead and stories about our great graduates and students.



## UNDERGRADUATE STUDY

**Bachelor of Architecture and Future Environments**

**Duration** 3 years full-time  
**Campus** City  
**Starts** 3 Mar 2025

**Bachelor of Construction**

- Construction Management
- Quantity Surveying

**Duration** 3 years full-time, part-time available  
**Campus** City  
**Starts** 3 Mar & 21 Jul 2025

**Bachelor of Design Te Tohu Paetahi mō te Hoahoa**

- Spatial and Interior Design

**Duration** 3 years full-time, part-time available  
**Campus** City  
**Starts** 3 Mar 2025

**Bachelor of Engineering (Honours)**

- Architectural Engineering
- Civil Construction Engineering

**Duration** 4 years full-time, part-time available  
**Campus** City  
**Starts** 3 Mar & 21 Jul 2025

**Graduate Diploma in Architecture**

**Duration** 1 year full-time  
**Campus** City  
**Starts** 3 Mar 2025

## POSTGRADUATE STUDY

**Master of Architecture (Professional)**

**Duration** 2 years full-time, part-time available  
**Campus** City  
**Starts** 3 Mar 2025

**Master of Engineering Project Management**

**Duration** 1 year full-time, part-time available  
**Campus** City  
**Starts** 3 Mar & 21 Jul 2025

**Doctor of Philosophy**

**Duration** 3-6 years  
**Campus** City  
**Starts** 1 Feb, 1 May, 1 July & 1 Oct 2025

**Master of Construction Management**

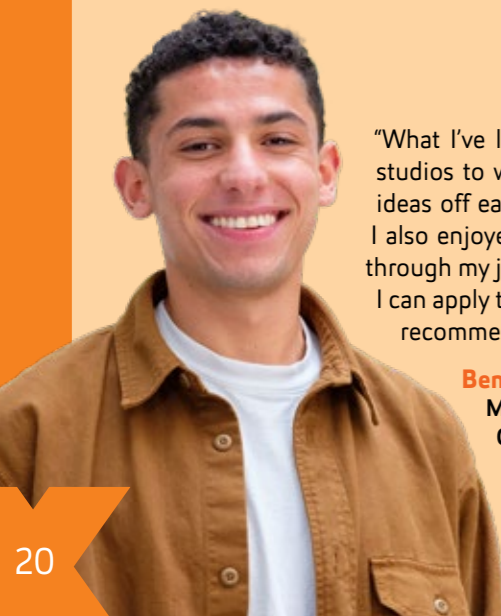
**Duration** 1 year full-time, part-time available  
**Campus** City  
**Starts** 3 Mar & 21 Jul 2025

**Master of Philosophy**

**Duration** 1 year full-time, 2 years part-time  
**Campus** City  
**Starts** 1 Feb, 1 May, 1 July & 1 Oct 2025

## WORLD-LEADING RESEARCH

AUT researchers work on projects across the built environment, in New Zealand and around the world, from advanced construction and regenerative design research to exploring the future of communities. As an architecture and built environment student, you can collaborate on projects, and work with graduates and architects to create meaningful change in the built environment. You work on research projects that demonstrate the way architecture, design intelligence and future cities can become intertwined.



"What I've liked the most about studying at AUT are the spacious and modern studios to work in, where students were encouraged to be creative and bounce ideas off each other all while working together through their individual projects. I also enjoyed the interesting range of topics we studied. AUT has supported me through my journey by identifying my strengths as a designer and teaching me how I can apply them to architecture, leading me to thrive in the discipline. I'd definitely recommend AUT to anyone."

**Benedict (Ben) Drayton**  
 Master of Architecture (Professional) student  
 Graduate Diploma in Architecture  
 Bachelor of Design in Industrial Design



"I wanted to get a New Zealand degree that provided an opportunity to develop expert competencies that bridge the gap between engineering concepts and project management principles to give myself further professional credibility. AUT has the longest-running postgraduate engineering project management programme in Aotearoa and has a good reputation for providing students with 'hands-on' experience. I appreciated the networking opportunities at AUT, and meeting like-minded colleagues and supporting each other's growth during the degree. I also enjoyed the Women in STEM workshops where we could empower ourselves in these competitive industries."

**Cristina Luces**  
 Senior Project Manager, Beca Ltd  
 Master of Engineering Project Management

# ART & DESIGN

AUT's art and design programmes are ranked in the top 200 worldwide in the QS World University Subject Rankings 2023. Our programmes focus on the connections between different art and design disciplines, the importance of mātauranga Māori, and new and emergent technologies. You can unleash your creativity by working in our art and design studio spaces, with access to world-class facilities that include three galleries, a 3D lab, printmaking, digital, photographic and moving image facilities (including a motion capture studio). You'll be supervised by our expert academic staff and have the chance to work on national and international projects, often with real industry clients.

  
**TOP 200**  
WORLDWIDE

  
Industry-leading studios,  
labs and technology

  
Award-winning,  
industry-experienced  
teaching staff

Scan this QR code  
for details about courses,  
where your study could lead  
and stories about our great  
graduates and students.



## UNDERGRADUATE STUDY

**Diploma in Design**  
Titohu mō te Hoahoa

**Duration** 1 year full-time,  
part-time available

**Campus** City

**Starts** 3 Mar 2025

**Diploma in Visual Arts**  
Titohu mō te Toi Ataata

**Duration** 1 year full-time,  
part-time available

**Campus** City

**Starts** 3 Mar 2025

**Bachelor of Design Te Tohu**  
Paetahi mō te Hoahoa

- Animation, Visual Effects and Game Design
- Communication Design
- Fashion Design
- Industrial Design
- Interaction Design
- Spatial and Interior Design

**Duration** 3 years full-time,  
part-time available

**Campus** City

**Starts** 3 Mar 2025

**Bachelor of Visual Arts Te**  
Tohu Paetahi mō Toi Ataata

- Painting, Printmaking and Drawing
- Photography, Sculpture and Moving-image

**Duration** 3 years full-time,  
part-time available

**Campus** City

**Starts** 3 Mar 2025

## POSTGRADUATE STUDY

**Master of Design**

**Duration** 1½ years full-time,  
up to 3 years part-time

**Campus** City

**Starts** 3 Mar 2025

**Master of Philosophy**

**Duration** 1 year full-time,  
part-time available

**Campus** City

**Starts** 1 Feb, 1 May, 1 July &  
1 Oct 2025

**Master of Visual Arts**

**Duration** 1½ years full-time,  
up to 3 years part-time

**Campus** City

**Starts** 3 Mar 2025

**Doctor of Philosophy**

**Duration** 3–6 years

**Campus** City

**Starts** 1 Feb, 1 May, 1 July &  
1 Oct 2025

## WORLD-CLASS RESEARCH

Our creative-led research covers a broad range of art and design disciplines; bringing together designers, visual artists, filmmakers and other creatives to explore different aspects of art and design. As an art and design student you have access to our industry-leading studios, labs and services. These include photographic and lighting facilities, and motion capture, printmaking and 3D labs. We're also the home of a suite of purpose-built galleries and project spaces dedicated to the development of contemporary art and a programme of exhibitions, events, symposia and publications.



"As a designer, I enjoy solving problems and turning my thoughts into reality. I love going through the design process and creating new things that no one has ever done. Choosing to study industrial design was probably one of the greatest decisions I made. Not only did I enjoy what I was studying, but I was surrounded by amazing people who inspired me every day to become the greatest version of myself. Having a great group of friends and classmates helped me grow into the designer I am today. I can't thank them enough. I've had so many highlights during my three years at AUT, and I would go back to and relive it all over again."

**Tui Meki**  
Industrial Designer, Playco Equipment Ltd  
Bachelor of Design in Industrial Design

"When I saw that AUT offered a degree that featured both storytelling and animation, I knew this was the degree for me! I love challenging my creativity and problem-solving skills, and I wanted to try applying them both into a career. I also loved that AUT's digital design degree offered a motion-capture minor, which was technology that amazed me. Being able to experiment with different forms of animation at AUT really opened my eyes to how powerful and moving the medium is. I especially loved being able to use the stop-motion room and equipment. This sparked my love for stop-motion's quirkiness and materiality, and ultimately led to my desire to feature it in our final-year project."

**Lily Martin-Babin**  
3D Animator, Flux Animation Studios  
Bachelor of Design in Digital Design



# BUSINESS

The AUT Business School has been awarded the prestigious EQUIS and AACSB accreditations, putting it in the top 5% of business schools in the world. Our programmes are designed in collaboration with business leaders, and integrate theory with current practice and global trends. As an AUT business student you'll have plenty of opportunities to develop your creativity, critical thinking, collaboration, and communication skills, and complete internships and applied projects that give you the competitive edge for your career. Once you graduate, you'll be ready to challenge routine thinking and put forward innovative solutions, no matter where your future career takes you.



Transforming business and society through our research



Connecting more students with employers through NZ's largest internship programme



Our business programmes are globally ranked and well regarded by employers

Scan this QR code for details about courses, where your study could lead and stories about our great graduates and students.



## UNDERGRADUATE STUDY

**Certificate in Business Studies****Duration** ½ year full-time, part-time available**Campus** City & South**Starts** 3 Mar & 21 Jul 2025**Diploma in Business****Duration** 1 year full-time, part-time available**Campus** City & South**Starts** 3 Mar & 21 Jul 2025**Bachelor of Business**

- Accounting © ⑤
- Economics ©
- Finance ©
- Human Resource Management and Employment Relations © ⑤
- Information Systems ©
- International Business and Strategy ©
- Management and Leadership © ⑤
- Marketing ©

**Duration** 3 years full-time, part-time available**Campus** City & South**Starts** 3 Mar & 21 Jul 2025**Bachelor of Arts & Bachelor of Business conjoint programme****Duration** 4 years full-time, part-time available**Campus** City**Starts** 3 Mar & 21 Jul 2025**Bachelor of Business & Bachelor of Computer and Information Sciences conjoint programme****Duration** 4 years full-time, part-time available**Campus** City & South**Starts** 3 Mar & 21 Jul 2025**Bachelor of Business & Bachelor of Health Science in Psychology conjoint programme****Duration** 4½ years full-time, part-time available**Campus** City & North<sup>1</sup>**Starts** 3 Mar & 21 Jul 2025**Bachelor of Business & Bachelor of International Hospitality Management conjoint programme****Duration** 4 years full-time, part-time available**Campus** City**Starts** 3 Mar & 21 Jul 2025**Graduate Certificate in Business****Duration** ½ year full-time, 1 year part-time**Campus** City & South**Starts** 3 Mar & 21 Jul 2025**Graduate Diploma in Business****Duration** 1 year full-time, part-time available**Campus** City & South**Starts** 3 Mar & 21 Jul 2025

## POSTGRADUATE STUDY

**Bachelor of Business (Honours)**

- Accounting
- Economics
- Finance
- Information Systems
- International Business
- Management
- Marketing
- Sport Leadership and Management

**Duration** 1 year full-time, part-time available**Campus** City**Starts** 3 Mar & 21 Jul 2025**Postgraduate Certificate in Business****Duration** ½ year full-time, part-time available**Campus** City**Starts** 3 Mar & 21 Jul 2025**Postgraduate Diploma in Business****Duration** 1 year full-time, part-time available**Campus** City**Starts** 3 Mar & 21 Jul 2025**Master of Business**

- Accounting
- Economics
- Finance
- Information Systems
- International Business
- Management
- Marketing
- Sport Leadership and Management

**Duration** 1½ years full-time, part-time available**Campus** City**Starts** 3 Mar & 21 Jul 2025**Master of Philosophy****Duration** 1 year full-time, part-time available**Campus** City & South**Starts** 1 Feb, 1 May, 1 July & 1 Oct 2025**Doctor of Philosophy****Duration** 3–6 years**Campus** City & South**Starts** 1 Feb, 1 May, 1 July & 1 Oct 2025

## KEY

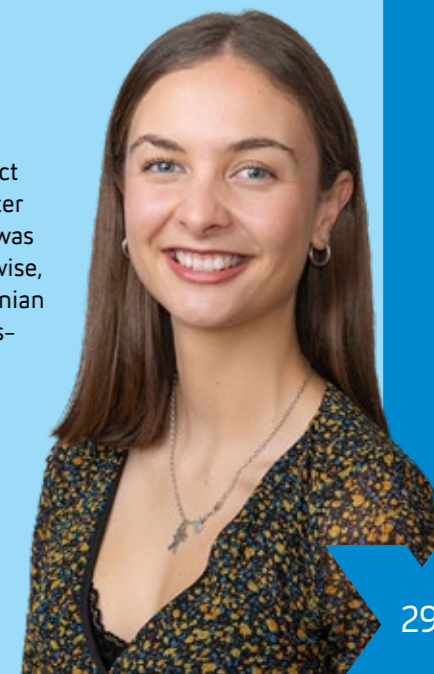
- © City Campus
- Ⓝ North Campus
- Ⓢ South Campus

1. Health courses offered at the North Campus.

“Everyone at AUT is so friendly and welcoming, including the staff. The fact that our class sizes were smaller meant that I got to know my lecturers better and they knew me as more than just a name on a roll. Because of this I was also presented with many opportunities that I wouldn’t have received otherwise, including being a teaching assistant as well as working with the Oceanian Leadership Network as a village tutor. I personally also believe that the hands-on skills and the soft skills you learn at AUT make you stand out in your future career.”

**Tayla Webb***Ngātiwai*

**Business Advisory Consultant, Deloitte**  
**Bachelor of Business in Accounting and Economics**





**Postgraduate Certificate in Business Administration**

**Duration** ½ year full-time, 1-1½ years part-time

**Campus** City

**Starts** 3 Mar, 12 May, 21 Jul & 29 Sep 2025

**Master of Business Administration**

**Duration** 1-1½ years full-time, 2-4 years part-time

**Campus** City

**Starts** 3 Mar, 12 May, 21 Jul & 29 Sep 2025

**Postgraduate Diploma in Professional Accounting**

**Duration** 8 months-1 year full-time, part-time available

**Campus** City

**Starts** 3 Mar & 3 Nov 2025

**Postgraduate Diploma in Business Administration**

**Duration** 8 months-1 year full-time, part-time available

**Campus** City

**Starts** 3 Mar, 12 May, 21 Jul & 29 Sep 2025

**Postgraduate Certificate in Business Studies**

**Duration** ½ year full-time, part-time available

**Campus** City

**Starts** 3 Mar & 3 Nov 2025

**Master of Professional Accounting**

**Duration** 1-1½ years full-time, part-time available

**Campus** City

**Starts** 3 Mar & 3 Nov 2025

**Postgraduate Certificate in Professional Accounting**

**Duration** ½ year full-time, part-time available

**Campus** City

**Starts** 3 Mar & 3 Nov 2025

**Postgraduate Diploma in Applied Finance**

**Duration** 8 months-1 year full-time, part-time available

**Campus** City

**Starts** 3 Mar & 3 Nov 2025

**Master of Applied Finance**

**Duration** 1-1½ years full-time, part-time available

**Campus** City

**Starts** 3 Mar & 3 Nov 2025

**Postgraduate Diploma in Marketing**

**Duration** 8 months-1 year full-time, part-time available

**Campus** City

**Starts** 3 Mar & 3 Nov 2025

**Master of Supply Chain Management**

**Duration** 1-1½ years full-time, part-time available

**Campus** City

**Starts** 3 Mar & 3 Nov 2025

**Postgraduate Diploma in Business Management**

**Duration** 8 months-1 year full-time, part-time available

**Campus** City

**Starts** 3 Mar & 3 Nov 2025

**Master of Marketing**

**Duration** 1-1½ years full-time, part-time available

**Campus** City

**Starts** 3 Mar & 3 Nov 2025

**Master of Business Management**

**Duration** 1-1½ years full-time, part-time available

**Campus** City

**Starts** 3 Mar & 3 Nov 2025

**Postgraduate Diploma in Supply Chain Management**

**Duration** 8 months-1 year full-time, part-time available

**Campus** City

**Starts** 3 Mar & 3 Nov 2025

**WORLD-LEADING RESEARCH**

Our world-class researchers work in all major disciplines in business, and in our specialist research centres. At the heart of our research is collaborative engagement with our external stakeholders in business, the professions, government and the community. For example, our researchers have undertaken projects for the Ministry of Business, Innovation and Employment; the Ministry of Women and the Productivity Commission, helping shape social policy directions and decisions.



“Economics and entrepreneurship specifically interested me in high school. AUT’s open day and the advisors clearly showed me that AUT was the university I wanted to be at, and I was impressed that the Bachelor of Business included sustainability courses and practical work experience. The class sizes are generally smaller than at other universities and I like that AUT is constantly looking at ways to further improve its degrees. AUT offers a wide range of support, from scholarship opportunities to the student association AUTSA. There are also lots of activities you can take part in, including the Shadow a Leader programme and a wide array of clubs.”

**William Austin**  
Graduate Consultant, PwC  
Master of Business in Economics  
Bachelor of Business in Economics and Finance



“What I liked about AUT is that it has an incredibly diverse group of students with respect to their ethnicity, career backgrounds, life experience etc. This has meant that I’ve learnt a lot about what different cultures value with regards to careers and learning, on top of the teachings that we get through the degree. The Master of Applied Finance is compacted down into a 12-month period, and the teaching is targeted at gaining practical skills that can be widely used in the finance and wider business industry. This has really suited both my practical learning style and my desire to start a career in finance.”

**Lewis Edmond**  
Master of Applied Finance student

# COMMUNICATION STUDIES

Ranked in the top 250 worldwide in the QS World University Subject Rankings 2023, communication studies at AUT prepares you for rewarding career options across many exciting industries. Our research-active academic staff are known as experts in communications and media studies, and our industry standard facilities include well-equipped TV and radio studios, sound and editing suites and a live news media centre. Study with us and you'll be equipped for the next evolution on the media horizon. It's one of many reasons why our alumni are highly-regarded around the world and regularly win media awards.



**TOP 250  
WORLDWIDE**  
for communication  
and media studies



State-of-the-art  
radio studio



Cutting-edge  
TV studios

Scan this QR code  
for details about courses,  
where your study could lead  
and stories about our great  
graduates and students.



## UNDERGRADUATE STUDY

**Diploma in Arts**

**Duration** 1 year full-time, part-time available

**Campus** City

**Starts** 3 Mar 2025

**Bachelor of Communication Studies**

- Advertising and Brand Creativity
- Digital Communication
- Journalism
- Public Relations
- Radio and Audio Media
- Screen Production

**Duration** 3 years full-time

**Campus** City

**Starts** 3 Mar & 21 Jul 2025

## WORLD-LEADING RESEARCH

Our world-class researchers have expertise across the field of communication studies, including Asia-Pacific media, journalism, media performance, multimodal analysis; online, social and digital media; political economy of communication, popular culture, public relations and radio. We're committed to innovative, critical and creative research that advances knowledge, serves the community, and helps our students become future leaders in the communication and media industry.



"The industry project in my final year as a PR student was the highlight of the degree for me. Getting to work with a client and learn everything from the basics of account management to brainstorming creative stakeholder engagement strategies was so valuable for starting in PR. In my group's project we helped a community zero waste programme develop an online engagement strategy. I was tasked with identifying and reaching out to national celebs and local community members that had a public profile – a pretty wild thing to be doing as a uni student!"

**Louis Hartley**

*Te Atiawa (Taranaki)*

Associate, GRC Partners + Porter Novelli

Bachelor of Communication Studies in Public Relations

## POSTGRADUATE STUDY

**Postgraduate Certificate in Communication Studies**

**Duration** ½ year full-time, part-time available

**Campus** City

**Starts** 3 Mar & 21 Jul 2025

**Postgraduate Diploma in Communication Studies**

- Digital Media
- Journalism
- Standard pathway (no specialisation)

**Duration** 1 year full-time, part-time available

**Campus** City

**Starts** 3 Mar & 21 Jul 2025

**Master of Communication Studies**

**Duration** 1½ years full-time, part-time available

**Campus** City

**Starts** 3 Mar & 21 Jul 2025

**Master of Philosophy**

**Duration** 1 year full-time, part-time available

**Campus** City

**Starts** 1 Feb, 1 May, 1 July & 1 Oct 2025

**Doctor of Philosophy**

**Duration** 3-6 years

**Campus** City

**Starts** 1 Feb, 1 May, 1 July & 1 Oct 2025

"I picked the Bachelor of Communication Studies at AUT because of how versatile the degree is for anyone wanting to explore the media industry. I was also impressed with the high-end facilities, gear, equipment and studios. I knew it would offer me the best experience and training to get me ready for the industry. One of the highlights of my time at AUT was seeing how close everyone in our degree became by the time we graduated. We spent three years together working on some of the most awesome, fun, creative projects – and we really became a family by the end of it."

**Melanie Dooley**

Senior Imaging Producer, MediaWorks

Bachelor of Communication Studies in Radio



# CREATIVE TECHNOLOGIES

Use technology and creativity to solve the complex challenges of our time, and learn to think outside the box with our programmes in creative technologies. At AUT, you'll experiment with things like augmented reality, robotics, gaming development tools, digital fabrication and sound engineering within a collaborative project-based studio environment. Your knowledge will be in demand within a wide range of cutting-edge industries. The world is changing fast, and people with imagination, advanced technological knowledge and entrepreneurial skills will be the ones to shape it.



Entrepreneurial focused degree structure



Mixed discipline degree



Creative approach to technology

Scan this QR code for details about courses, where your study could lead and stories about our great graduates and students.



## POSTGRADUATE STUDY

## Postgraduate Certificate in Creative Technologies

**Duration** ½ year full-time, part-time available

**Campus** City

**Starts** 3 Mar 2025

## Master of Creative Technologies

**Duration** 1½ years full-time, part-time available

**Campus** City

**Starts** 3 Mar 2025

## Master of Philosophy

**Duration** 1 year full-time, part-time available

**Campus** City

**Starts** 1 Feb, 1 May, 1 July & 1 Oct 2025

## Doctor of Philosophy

**Duration** 3-6 years

**Campus** City

**Starts** 1 Feb, 1 May, 1 July & 1 Oct 2025

## WORLD-LEADING RESEARCH

Our world-class labs are hubs for sharing expertise and research outcomes, and include the 3D Lab and Motion Capture Lab. We're proud of our strong partnerships with businesses and the community, and our researchers and postgraduate students often collaborate with industry organisations on research or other projects.



"The biggest reasons for coming back to AUT for my doctoral studies were the staff, and AUT's practical research approach and strong innovative, future-thinking mindset. I knew that at AUT I'd be surrounded by academics who would understand not only my mindset, but also be able to push the research to new innovative heights. I love having the time to really focus on what the problem or project is, and carefully think about what tools, questions or actions I need to solve that problem. And in that time, it's the discussions with the academics and other PhD students that take my PhD journey to places I might not have thought of before."

**Claudine Nalesu**

Doctor of Philosophy candidate  
Master of Creative Technologies  
Bachelor of Creative Technologies



## CITY CAMPUS

The AUT City Campus is in the heart of Auckland and is AUT's biggest campus. It's home to our architecture, art and design, business, creative technologies, communications; engineering, computer and mathematical sciences; hospitality, languages, law, Māori development, science and social sciences programmes.

# EDUCATION

At AUT you'll find all the support, encouragement and inspiration you'll need to develop an outstanding career in education. Our widely regarded education programmes focus on academic knowledge and provide you with invaluable practical experience in teaching and education, through work placements in schools or early learning services. Our postgraduate and research students work in collaboration with academic staff who are internationally known as experts in the fields of pedagogy, education policy, e-learning and educational leadership.



Expert lecturers in specialist education disciplines and education research



UP TO  
**25**  
WEEKS  
of professional practice – many of our students are offered jobs during their placements



Collaborative and interactive classes

Scan this QR code for details about courses, where your study could lead and stories about our great graduates and students.



## UNDERGRADUATE STUDY

<b>Certificate in Arts</b> Duration ½ year full-time, part-time available Campus City Starts 3 Mar & 21 Jul 2025	<b>Bachelor of Arts</b> • Education Duration 3 years full-time, part-time available Campus City Starts 3 Mar & 21 Jul 2025	<b>Graduate Diploma in Secondary Teaching<sup>2</sup></b> Duration 1 year full-time Campus City & North Starts 24 Feb & 21 Jul 2025
<b>Diploma in Arts</b> Duration 1 year full-time, part-time available Campus City Starts 3 Mar & 21 Jul 2025	<b>Graduate Certificate in Arts</b> Duration ½ year full-time, part-time available Campus City & North Starts 3 Mar & 21 Jul 2025	<b>Bachelor of Arts &amp; Bachelor of Business conjoint programme</b> Duration 4 years full-time, part-time available Campus City <sup>3</sup> Starts 3 Mar & 21 Jul 2025
<b>Bachelor of Education ([Specialty] Teaching)<sup>1,2</sup></b> • Early Childhood Teaching • Primary Teaching Duration 3 years full-time, part-time available Campus North & South Starts 3 Mar 2025	<b>Graduate Diploma in Arts</b> Duration 1 year full-time, part-time available Campus City & North Starts 3 Mar & 21 Jul 2025	<b>Bachelor of Arts &amp; Bachelor of Computer and Information Sciences conjoint programme</b> Duration 4 years full-time, part-time available Campus City Starts 3 Mar & 21 Jul 2025

## WORLD-LEADING RESEARCH

We believe in high-quality research that has impact, and have world-class researchers and research strengths across education. Our research-active staff are widely known for their expertise in all areas of the education sector – from education policy, the changing nature of public education and mindfulness for teachers, to educational leadership and leadership development, equity, culture and diversity, and the philosophy of education.



"I chose this degree because I had such good role models in my teachers when I was growing up. I now want to be that role model for future students, especially for refugee students. I love having an influence on future generations – it's such a rewarding job seeing children grow and become happy learners. After looking at different universities, I chose AUT because I found that it had the most diverse student base, and the staff were very kind and understanding. The admissions staff supported me a lot during the application and enrolment phase, and I just knew that the professors would be the same."

**Rhoda Habtom Tesfazghi**  
3rd-year student, Bachelor of Education (Primary Teaching)

## POSTGRADUATE STUDY

<b>Bachelor of Arts (Honours)</b> Duration 1 year full-time, part-time available Campus North & South Starts 3 Mar & 21 Jul 2025	<b>Postgraduate Diploma in Teaching and Learning<sup>2</sup></b> • Early Childhood Teaching • Primary Teaching Duration 1 year full-time Campus North & City Starts 10 Feb & 7 Jul 2025 <sup>4</sup>	<b>Master of Philosophy</b> Duration 1 year full-time, part-time available Campus North Starts 1 Feb, 1 May, 1 July & 1 Oct 2025
<b>Postgraduate Certificate in Education</b> • Educational Leadership Duration ½ year full-time, part-time available Campus City, North & South Starts 3 Mar & 21 Jul 2025	<b>Master of Education</b> • Educational Leadership Duration 1½ years full-time, part-time available Campus City, North & South Starts 3 Mar & 21 Jul 2025	<b>Doctor of Philosophy</b> Duration 3–6 years Campus North Starts 1 Feb, 1 May, 1 July & 1 Oct 2025
<b>Postgraduate Diploma in Education</b> • Educational Leadership Duration 1 year full-time, part-time available Campus City, North & South Starts 3 Mar & 21 Jul 2025	<b>Master of Teaching and Learning<sup>2</sup></b> • Early Childhood Teaching • Primary Teaching Duration 1 year full-time Campus North Starts 10 Feb & 7 Jul 2025 <sup>4</sup>	<b>Doctor of Education</b> Duration 2 years part-time (coursework – research portfolios), plus 3 years (thesis) Campus North Starts 3 Mar 2025

1. Not open for international applicants without NCEA.
2. This is a teaching qualification and prepares you to become a teacher.
3. Business courses also available at the South Campus.
4. July start date applies to the Early Childhood Teaching specialisation only.

"Teaching has always been my dream career. I wanted to be in a position where I can guide, support and encourage the tamariki of Aotearoa and be an example that anyone – no matter how young or old – can turn their dreams into reality, just like me. AUT is the sort of place where you can express yourself freely within a safe environment. From the day I first enquired about studying at AUT to my very last day behind a computer screen, the staff and wider student community have supported, encouraged, and pushed me to achieve great things. At AUT, you're definitely not just a number; you are you!"

**Kalen Chase**  
Ngāti Porou, Ngāti Kahungunu, Ngāphui, Taranaki Tūturu  
Mathematics Teacher, Manurewa Intermediate School  
Bachelor of Education (Primary Pasifika Teaching)



# ENGINEERING, COMPUTER & MATHEMATICAL SCIENCES

Study engineering, computing or mathematical sciences and play a leading role in the technological, social and economic development of the world today. Our teaching and research staff are among the best in New Zealand and internationally. Our computing, software and engineering programmes have the highest standards in student experience, and our alumni are highly sought-after by employers around the world. With access to outstanding facilities you'll be equipped to make industry-leading discoveries in collaboration with classmates, research staff and partner organisations.



International recognition through Engineering New Zealand accreditation, Sydney and Washington Accords



State-of-the-art Engineering, Computer and Mathematical Sciences building



Student access to high-tech labs network



Scan this QR code for details about courses, where your study could lead and stories about our great graduates and students.



## UNDERGRADUATE STUDY

**Diploma in Computer and Information Sciences**

**Duration** 1 year full-time, part-time available  
**Campus** City  
**Starts** 3 Mar & 21 Jul 2025

**Diploma in Engineering**

**Duration** 1 year full-time, part-time available  
**Campus** City  
**Starts** 3 Mar & 21 Jul 2025

**Bachelor of Computer and Information Sciences**

- Computer Science
- Data Science
- Digital Services
- Networks and Cybersecurity
- Software Development

**Duration** 3 years full-time, part-time available  
**Campus** City  
**Starts** 3 Mar & 21 Jul 2025

**Bachelor of Engineering (Honours)**

- Architectural Engineering
- Civil Construction Engineering
- Electrical and Electronic Engineering
- Maritime Engineering (Marine and Offshore Engineering, Naval Architecture, Ocean Engineering)<sup>1</sup>
- Mechanical Engineering
- Mechatronics Engineering
- Software Engineering

**Duration** 4 years full-time, part-time available  
**Campus** City  
**Starts** 3 Mar & 21 Jul 2025

**Bachelor of Engineering Technology**

- Electrical and Electronic Engineering
- Mechanical Engineering

**Duration** 3 years full-time, part-time available  
**Campus** City  
**Starts** 3 Mar & 21 Jul 2025

**Bachelor of Science**

- Analytics
- Mathematical Modelling and Computation

**Duration** 3 years full-time, part-time available  
**Campus** City  
**Starts** 3 Mar & 21 Jul 2025

**Bachelor of Arts & Bachelor of Computer and Information Sciences conjoint programme**

**Duration** 4 years full-time, part-time available  
**Campus** City  
**Starts** 3 Mar & 21 Jul 2025

**Bachelor of Business & Bachelor of Computer and Information Sciences conjoint programme**

**Duration** 4 years full-time, part-time available  
**Campus** City<sup>2</sup>  
**Starts** 3 Mar & 21 Jul 2025

**Graduate Certificate in Computer and Information Sciences**

**Duration** ½ year full-time, 1 year part-time  
**Campus** City  
**Starts** 3 Mar & 21 Jul 2025

**Graduate Diploma in Computer and Information Sciences**

**Duration** 1 year full-time, part-time available  
**Campus** City  
**Starts** 3 Mar & 21 Jul 2025

**Graduate Certificate in Science**

**Duration** ½ year full-time, part-time available  
**Campus** City  
**Starts** 3 Mar & 21 Jul 2025

**Graduate Diploma in Science**

**Duration** 1 year full-time, part-time available  
**Campus** City  
**Starts** 3 Mar & 21 Jul 2025

1. The Maritime Engineering majors are only available to New Zealand citizens.  
 2. Business courses are also available at the South Campus

**WORLD-LEADING RESEARCH**

Research is our strength, and we have a strong focus on research in collaboration with our many industry partners. Our research expertise ranges from artificial intelligence to robotics and data science to power and energy engineering. As a postgraduate student, you'll learn from globally renowned academic staff and have access to our world-class research institutes and facilities.

Our research centres, groups and initiatives include:

**Data science**

- Data Science Research Centre
- Mathematical Modelling and Analytics Research Centre
- High Performance Computing Research Laboratory

**Intelligent systems**

- Institute of Robotics and Vision
- Networking and Security Research Centre
- Software Engineering Research Centre
- Ubiquitous and Web Computing
- Wireless and Intelligent Systems Engineering

**Health technologies**

- Knowledge, Engineering and Discovery Research Innovation
- BioDesign Lab
- Institute of Biomedical Technologies

**Energy**

- Centre of Future Power and Energy Research
- Thermodynamic Engineering Research and Applications Lab

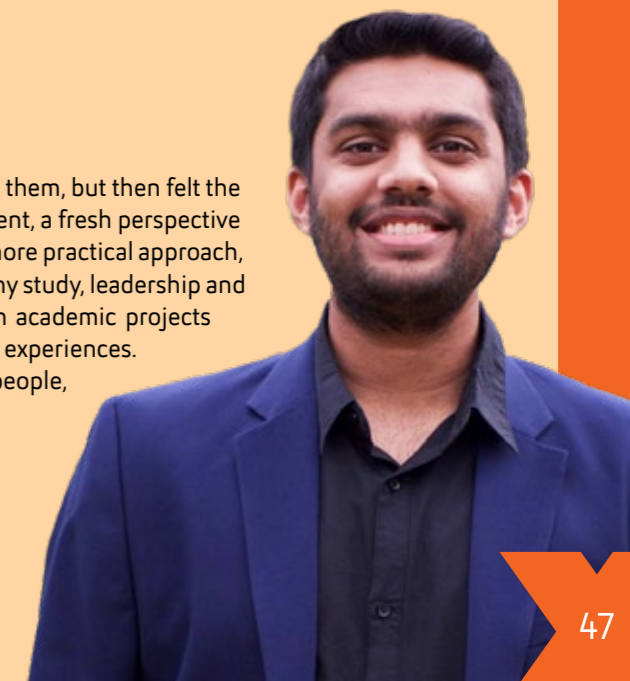
**Materials science**

- Smart Systems, Materials and Manufacturing Research Centre

"I was always that one child who tried opening devices and broke them, but then felt the need to try fix them. I always wanted to achieve something different, a fresh perspective on solving problems. With its younger vibe, smaller classes and more practical approach, AUT seemed to be an easy choice for me. Over the four years of my study, leadership and connections are the main skills I have developed, both through academic projects and by working with different industries in internships and work experiences. AUT gave me a lot of different opportunities to connect with people, work with them, and build personal and close connections."

**Prayag Shethia**

Process Development Engineer, Fisher & Paykel Healthcare  
 Bachelor of Engineering (Honours) in Mechatronics Engineering



## POSTGRADUATE STUDY

**Postgraduate Certificate in Computer and Information Sciences**

**Duration** ½ year full-time, part-time available  
**Campus** City  
**Starts** 3 Mar & 21 Jul 2025

**Postgraduate Diploma in Computer and Information Sciences**

**Duration** 1 year full-time, part-time available  
**Campus** City  
**Starts** 3 Mar & 21 Jul 2025

**Master of Computer and Information Sciences**

**Duration** 1-1½ years full-time, part-time available  
**Campus** City  
**Starts** 3 Mar & 21 Jul 2025

**Postgraduate Certificate in Science**

**Duration** ½ year full-time, part-time available  
**Campus** City  
**Starts** 3 Mar & 21 Jul 2025

**Postgraduate Diploma in Science**

**Duration** 1 year full-time, part-time available  
**Campus** City  
**Starts** 3 Mar & 21 Jul 2025

**Master of Science**

**Duration** 1 year full-time, part-time available  
**Campus** City  
**Starts** 3 Mar & 21 Jul 2025

**Master of Analytics**

**Duration** 1½ years full-time, part-time available  
**Campus** City  
**Starts** 3 Mar & 21 Jul 2025

**Master of Cyber Security and Digital Forensics**

**Duration** 1½ years full-time, part-time available  
**Campus** City  
**Starts** 3 Mar & 21 Jul 2025

**Postgraduate Certificate in Engineering**

**Duration** ½ year full-time, part-time available  
**Campus** City  
**Starts** 3 Mar & 21 Jul 2025

**Postgraduate Diploma in Engineering**

**Duration** 1 year full-time, part-time available  
**Campus** City  
**Starts** 3 Mar & 21 Jul 2025

**Master of Engineering**

**Duration** 1-1½ years full-time, part-time available  
**Campus** City  
**Starts** 3 Mar & 21 Jul 2025

**Master of Construction Management**

**Duration** 1 year full-time, part-time available  
**Campus** City  
**Starts** 3 Mar & 21 Jul 2025

**Master of Engineering Project Management**

**Duration** 1 year full-time, part-time available  
**Campus** City  
**Starts** 3 Mar & 21 Jul 2025

**Master of IT Project Management**

**Duration** 1 year full-time, part-time available  
**Campus** City  
**Starts** 3 Mar & 21 Jul 2025

**Master of Philosophy**

**Duration** 1 year full-time, part-time available  
**Campus** City  
**Starts** 1 Feb, 1 May, 1 July & 1 Oct 2025

**Doctor of Philosophy**

**Duration** 3-6 years  
**Campus** City & South  
**Starts** 1 Feb, 1 May, 1 July & 1 Oct 2025



"I met some amazing friends during my time at AUT, both from the international student community and from my course. I had some great lecturers as well who helped me realise the full potential of an engineering degree and all the possible directions it could take me. That helped me discover my passion for embedded engineering and shaped my engineering career into what it has become today. I now get to be part of the full journey from product design to software development and software releases to customers. This means I can see how my work is being used in the real world and go 'I wrote the software that makes that work!'"

**Sophie Hergot**  
 Embedded Software Engineer, Turntide Technologies, Newcastle upon Tyne, United Kingdom  
 Bachelor of Engineering (Honours) in Electrical and Electronic Engineering

"I decided to pursue a degree in data science because I had been following sports and the statistical analysis of player performances against other metrics sparked my interest. I'm excited about understanding how this works, and it's interesting to apply the skills from this degree to the sporting analytical world. My final-year project – Moneyball for Motorsport – gave me the opportunity to delve deeper into sports analytics. Applying my knowledge to practical scenarios was so rewarding! I enjoyed working on a real-life scenario for a company and gain experiences that will help me throughout my future. I could see myself as a sports analyst or a data analyst in my future career."

**Monalisa Verma**  
 Master of Analytics student  
 Bachelor of Computer and Information Sciences in Data Science



# HEALTH SCIENCES

AUT is one of the biggest health science education providers in New Zealand. We draw on research and industry practice to prepare you for a rewarding career in this growing sector, and our graduates are in demand around the world. Thanks to our strong connections with organisations across the health sector, you'll have lots of opportunities to practise what you've learnt during your clinical placements or treat patients in our on-campus clinics. Our academic staff and postgraduate students often conduct groundbreaking research to improve our understanding of health and environmental issues, generate new products and technologies, and enhance professional practice.



NZ's fastest growing and most diverse health educator



**TOP 300**  
**WORLDWIDE**  
for health subjects



8 health clinic services with industry standard equipment

Scan this QR code for details about courses, where your study could lead and stories about our great graduates and students.



## UNDERGRADUATE STUDY

**Diploma in Paramedic Science**

**Duration** 1 year full-time  
**Campus** South  
**Starts** 3 Mar & 21 Jul 2025

**Bachelor of Health Science**

- Individual Pathway <sup>(N) (S)</sup>
- Case Management <sup>(N)</sup>
- Counselling <sup>(S)</sup>
- Health Management <sup>(S)</sup>
- Midwifery <sup>(D) (S)</sup>
- Nursing <sup>(N)</sup>
- Occupational Therapy <sup>(N)</sup>
- Oral Health <sup>(N)</sup>
- Paramedicine <sup>(S)</sup>
- Perioperative Practice <sup>(S)</sup>
- Physiotherapy <sup>(N)</sup>
- Podiatry <sup>(N)</sup>
- Psychology <sup>(N)</sup>
- Public and Environmental Health <sup>(S)</sup>

**Duration** 3 years full-time (4 years full-time for Midwifery and Physiotherapy), part-time available in some pathways

**Campus** North & South  
**Starts** 3 Mar & 21 Jul 2025

**Bachelor of Business & Bachelor of Health Science in Psychology conjoint programme**

**Duration** 4½ years full-time, part-time available  
**Campus** City & North<sup>1</sup>  
**Starts** 3 Mar & 21 Jul 2025

**Graduate Certificate in Health Science**

**Duration** ½ year full-time, part-time available  
**Campus** North & South  
**Starts** 3 Mar & 21 Jul 2025

**Graduate Diploma in Health Science**

**Duration** 1 year full-time, part-time available  
**Campus** North & South  
**Starts** 3 Mar & 21 Jul 2025

**Graduate Diploma in Psychotherapy Studies**

**Duration** 1 year full-time, part-time available  
**Campus** North  
**Starts** 3 Mar 2025

## KEY

- <sup>(C)</sup> City Campus
- <sup>(N)</sup> North Campus
- <sup>(S)</sup> South Campus
- <sup>(D)</sup> Distance learning

## POSTGRADUATE STUDY

**Bachelor of Health Science (Honours)**

**Duration** 1 year full-time, part-time available  
**Campus** North  
**Starts** 3 Mar 2025

**Bachelor of Health Science (Physiotherapy) (Honours)**

**Duration** 4 years full-time  
**Campus** North  
**Starts** 21 Jul 2025

**Postgraduate Certificate in Health Science**

- Acupuncture <sup>(N)</sup>
- Child Health <sup>(N) (S)</sup>
- Health Care Ethics <sup>(C) (S)</sup>
- Leadership and Management <sup>(N)</sup>
- Māori Health <sup>(C) (S)</sup>
- Mental Health and Addictions <sup>(N)</sup>
- Midwifery <sup>(S)</sup>
- Older Adult: Health and Wellness <sup>(N)</sup>
- Podiatry <sup>(N)</sup>
- Rehabilitation <sup>(N)</sup>
- Resuscitation <sup>(S)</sup>
- Violence and Trauma Studies <sup>(N)</sup>

**Duration** ½ year full-time, part-time available  
**Campus** North & South  
**Starts** 3 Mar & 21 Jul 2025

**Postgraduate Certificate in Advanced Nursing Practice**

**Duration** ½ year full-time, part-time available  
**Campus** North  
**Starts** 3 Mar & 21 Jul 2025

**Postgraduate Diploma in Registered Nurse Prescribing**

**Duration** 1 year full-time, part-time available  
**Campus** North  
**Starts** 3 Mar & 21 Jul 2025

**Postgraduate Diploma in Health Science**

- Acupuncture <sup>(N)</sup>
- Advanced Nursing Practice <sup>(N)</sup>
- Child Health <sup>(N) (S)</sup>
- Health Care Ethics <sup>(C) (S)</sup>
- Leadership and Management <sup>(N)</sup>
- Māori Health <sup>(C) (S)</sup>
- Mental Health and Addictions <sup>(N)</sup>
- Midwifery <sup>(S)</sup>
- Musculoskeletal Physiotherapy <sup>(N)</sup>
- Older Adult: Health and Wellness <sup>(N)</sup>
- Paramedicine <sup>(S)</sup>
- Podiatry <sup>(N)</sup>
- Rehabilitation <sup>(N)</sup>
- Violence and Trauma Studies <sup>(N)</sup>

**Duration** 1 year full-time, part-time available  
**Campus** North & South  
**Starts** 3 Mar & 21 Jul 2025

**Master of Health Practice**

- Acupuncture <sup>(N)</sup>
- Child Health <sup>(N) (S)</sup>
- Māori Health <sup>(C) (S)</sup>
- Mental Health and Addictions <sup>(N)</sup>
- Midwifery <sup>(S)</sup>
- Musculoskeletal Physiotherapy <sup>(N)</sup>
- Nursing <sup>(N)</sup>
- Paramedicine <sup>(S)</sup>
- Podiatry <sup>(N)</sup>
- Rehabilitation <sup>(N)</sup>
- Violence and Trauma Studies <sup>(N)</sup>

**Duration** 1½ years full-time, part-time available  
**Campus** North & South  
**Starts** 3 Mar & 21 Jul 2025

**Master of Health Science**

- Advanced Nursing Practice
- Podiatry
- Psychology

**Duration** 2 years full-time, part-time available  
**Campus** North  
**Starts** 3 Mar & 21 Jul 2025

**Master of Nursing Science**

**Duration** 2 years full-time  
**Campus** South  
**Starts** 3 Mar 2025

**Master of Physiotherapy Practice**

**Duration** 2 years full-time  
**Campus** North  
**Starts** 28 Jan 2025



"I have a passion for working for and with my Māori culture, and want to make a difference to people in need of help. I wanted to be that person who can make that positive change, and a great way to do this was by working in the medical field. Nursing is a programme I highly recommend. It offers students many opportunities to develop and upskill to achieve success and grow into competent graduate nurses ready for future practice. The support structures that are in place at AUT allow students to work hard in an environment where they are fully supported."

**Taria Viliua***Ngāpuhi, Tainui*

**Clinical Nurse Specialist, Te Whatu Ora – Waitematā**  
**Postgraduate Diploma in Health Science in Advanced Nursing Practice student**  
**Bachelor of Health Science (Nursing)**

1. Business courses offered at the City or South Campus; health courses at the North Campus.

## POSTGRADUATE STUDY CONTINUED

**Postgraduate Diploma in Counselling Psychology**

Duration 1 year full-time  
 Campus North  
 Starts 3 Mar 2025

**Master of Psychotherapy**

Duration 2 years full-time, part-time available  
 Campus North  
 Starts 3 Mar 2025

**Postgraduate Certificate in Disaster Risk Management and Development**

Duration ½ year full-time, part-time available  
 Campus South  
 Starts 3 Mar & 21 Jul 2025

**Postgraduate Diploma in Disaster Risk Management and Development**

Duration 1 year full-time, part-time available  
 Campus South  
 Starts 3 Mar & 21 Jul 2025

**Master of Disaster Risk Management and Development**

Duration 1½ years full-time, part-time available  
 Campus South  
 Starts 3 Mar & 21 Jul 2025

**Postgraduate Certificate in Public Health**

Duration ½ year full-time, part-time available  
 Campus South  
 Starts 3 Mar 2025

**Postgraduate Diploma in Public Health**

Duration 1 year full-time, part-time available  
 Campus South  
 Starts 3 Mar & 21 Jul 2025

**Master of Public Health**

Duration 2 years full-time, part-time available  
 Campus South  
 Starts 3 Mar & 21 Jul 2025

**Master of Philosophy**

Duration 1 year full-time, part-time available  
 Campus North & South  
 Starts 1 Feb, 1 May, 1 July & 1 Oct 2025

**Doctor of Philosophy**

Duration 3-6 years  
 Campus North & South  
 Starts 1 Feb, 1 May, 1 July & 1 Oct 2025

**Doctor of Health Science**

Duration 3½ years full-time, part-time available  
 Campus South  
 Starts 3 Mar & 21 Jul 2025

## WORLD-LEADING RESEARCH

AUT is home to world-leading researchers across the field of health sciences. We have strong connections with the health sector and deliver leading research in health sciences.

For example, we've led the world's largest study of problem gambling treatments, run New Zealand's only longitudinal study of Pacific Island families and created an award-winning app to assess people's stroke risk.

Our research centres and groups include:

- Centre for Active Ageing
- Centre for Interdisciplinary Trauma Research
- Centre for Midwifery and Women's Health Research
- Centre for Person Centred Research
- Child and Youth Health Research Centre
- Gambling and Addictions Research Centre
- Health and Rehabilitation Research Institute
- Institute of Biomedical Technologies
- Migrant and Refugee Health Research Centre
- National Centre for Interprofessional Education and Collaborative Practice
- National Institute of Stroke and Applied Neurosciences
- Pacific Health Research Centre
- Public Health and Mental Health Research Institute
- Taupua Waiora Research Centre
- Traumatic Brain Injury Network



"The students at AUT are super friendly which makes it easy to connect and create friendships by simply getting involved in any one of the countless opportunities offered at AUT. I really enjoyed visiting other campuses, getting involved in AUTSA events and meeting up with friends to join a dance class or watch a movie at the AUT recreation centre. I also enjoyed the clinical placement part of my degree. It gave me a taste of what it would be like to work as an oral health therapist and fuelled my motivation to study harder."

**Khooshi Patel**

Oral Health Therapist, ARDS | Te Whatu Ora – Waitematā  
 Bachelor of Health Science (Oral Health)

"During my final-year workplace experience, I was given the fantastic opportunity to learn how our biggest healthcare provider operates at a ground level. I was mentored at ACC's Newmarket office and given a chance to display my learnings. This helped me develop confidence and strengthened my passion for the healthcare sector. I also always connected what I learned in courses like disaster risk management and quality in the health sector to my own background. Learning how robust and well-thought-out the New Zealand healthcare system is gave me insights into what works well and how it could be incorporated in developing nations like Somalia."

**Mohamed Abdulkadir Mohamed**

Project Advisor Health and Safety Lead, New Zealand Ethnic Women's Trust  
 Bachelor of Health Science in Health Management



# HOSPITALITY, TOURISM & EVENTS

Study hospitality, tourism and event management with us, and you'll be well-prepared for a career that can take you anywhere in the world to create experiences that make a lasting impact on people. University rankings organisation QS has ranked us first in New Zealand and the Shanghai Ranking places us 32nd in the world. Our tourism programmes are accredited by the United Nations World Tourism Organization (UNWTO) for higher tourism education, training and research programmes. You'll be taught by academic staff who are globally known as experts in their fields, and have access to our industry-standard facilities. You'll also have lots of opportunities to apply your learning in the industry, or perhaps even gain international experience as part of your studies.



**#1**  
**IN NEW ZEALAND**  
for Hospitality & Leisure  
Management



Massive industry-wide  
connections in hospitality  
and tourism



Huge opportunities for workplace  
experience and international  
study exchanges

Scan this QR code  
for details about courses,  
where your study could lead  
and stories about our great  
graduates and students.



## UNDERGRADUATE STUDY

**Certificate in Arts**

**Duration** ½ year full-time, part-time available  
**Campus** City  
**Starts** 3 Mar & 21 Jul 2025

**Diploma in Arts**

**Duration** 1 year full-time, part-time available  
**Campus** City  
**Starts** 3 Mar & 21 Jul 2025

**Diploma in Culinary Arts**

**Duration** 2 years full-time  
**Campus** City  
**Starts** 3 Mar & 21 Jul 2025

**Diploma in Pâtisserie**

**Duration** 2 years full-time  
**Campus** City  
**Starts** 3 Mar 2025

**Bachelor of Arts**

- Culinary Arts
- Event Management
- Global Tourism

**Duration** 3 years full-time, part-time available  
**Campus** City  
**Starts** 3 Mar & 21 Jul 2025

**Graduate Certificate in Arts**

**Duration** ½ year full-time, part-time available  
**Campus** City  
**Starts** 3 Mar & 21 Jul 2025

**Graduate Diploma in Arts**

**Duration** 1 year full-time, part-time available  
**Campus** City  
**Starts** 3 Mar & 21 Jul 2025

**Bachelor of International Hospitality Management**

- Hospitality Enterprise
- Hospitality Management

**Duration** 3 years full-time, part-time available  
**Campus** City  
**Starts** 3 Mar & 21 Jul 2025

**Graduate Certificate in International Hospitality Management**

**Duration** ½ year full-time, part-time available  
**Campus** City  
**Starts** 3 Mar & 21 Jul 2025

**Graduate Diploma in International Hospitality Management**

**Duration** 1 year full-time, part-time available  
**Campus** City  
**Starts** 3 Mar & 21 Jul 2025

**Bachelor of Arts & Bachelor of Business conjoint programme**

**Duration** 4 years full-time, part-time available  
**Campus** City<sup>1</sup>  
**Starts** 3 Mar & 21 Jul 2025

**Bachelor of Arts & Bachelor of Computer and Information Sciences conjoint programme**

**Duration** 4 years full-time, part-time available  
**Campus** City  
**Starts** 3 Mar & 21 Jul 2025

**Bachelor of Business & Bachelor of International Hospitality Management conjoint programme**

**Duration** 4 years full-time, part-time available  
**Campus** City<sup>1</sup>  
**Starts** 3 Mar & 21 Jul 2025

1. Business courses also available at the South Campus

**WORLD-LEADING RESEARCH**

Our research aims to have a social impact for a more hospitable and sustainable future – from contributing to sustainable food systems and sustainable events, to championing accessible and inclusive tourism and hospitality. As a postgraduate student you'll work with academic staff who focus on delivering innovative solutions for the hospitality and tourism industry and have been involved in research projects across the globe.



"Successfully planning and producing a public event as part of my degree was a massive highlight. This gave me the opportunity to test my skills in a real-life setting and proved to be an amazing networking opportunity after graduating. I loved meeting like-minded people that I've stayed in touch with and who helped me get my foot in the door for my first graduate role. Another standout for me was being invited to a lecture where Dan Turner from Rhythm and Vines was speaking and, after hearing about his career, I knew events was the right career for me."

**Jolyon Walsh**

Sales & Event Coordinator, Eventfinda Stadium  
 Bachelor of Arts in Event Management & Marketing, Advertising, Retailing and Sales

"What I liked about AUT is that it has more connotations of innovative and creative thinking than other New Zealand universities. I enjoy problem-solving and as a postgraduate student I've really been able to sink my teeth into challenges faced by communities around the world. For my PhD research, I'm focusing on beach tourism for people with disabilities and their experiences of the beach. With at least 1 billion people worldwide estimated to be living with a disability and roughly 80% of the world's tourism taking place in coastal destinations, it seemed like an obvious topic to gravitate towards."

**Sophie Hayden**

Doctor of Philosophy candidate  
 Master of International Tourism Management  
 Graduate Diploma in International Tourism Management



## POSTGRADUATE STUDY

**Bachelor of Arts (Honours)**

Duration 1 year full-time,  
part-time available

Campus City

Starts 3 Mar & 21 July 2025

**Postgraduate Certificate in Gastronomy**

Duration ½ year full-time,  
part-time available

Campus City

Starts 3 Mar & 21 Jul 2025

**Postgraduate Diploma in Gastronomy**

Duration 1 year full-time,  
part-time available

Campus City

Starts 3 Mar & 21 Jul 2025

**Master of Gastronomy**

Duration 1½ years full-time,  
part-time available

Campus City

Starts 3 Mar & 21 Jul 2025

**Postgraduate Certificate in International Hospitality Management**

Duration ½ year full-time,  
part-time available

Campus City

Starts 3 Mar & 21 Jul 2025

**Postgraduate Diploma in International Hospitality Management**

Duration 1 year full-time,  
part-time available

Campus City

Starts 3 Mar & 21 Jul 2025

**Master of International Hospitality Management**

Duration 1½ years full-time,  
part-time available

Campus City

Starts 3 Mar & 21 Jul 2025

**Postgraduate Certificate in International Tourism Management**

Duration ½ year full-time,  
part-time available

Campus City

Starts 3 Mar & 21 Jul 2025

**Postgraduate Diploma in International Tourism Management**

Duration 1 year full-time,  
part-time available

Campus City

Starts 3 Mar & 21 Jul 2025

**Master of International Tourism Management**

Duration 1½ years full-time,  
part-time available

Campus City

Starts 3 Mar & 21 Jul 2025

**Master of Philosophy**

Duration 1 year full-time,  
part-time available

Campus City

Starts 1 Feb, 1 May, 1 July &  
1 Oct 2025

**Doctor of Philosophy**

Duration 3–6 years

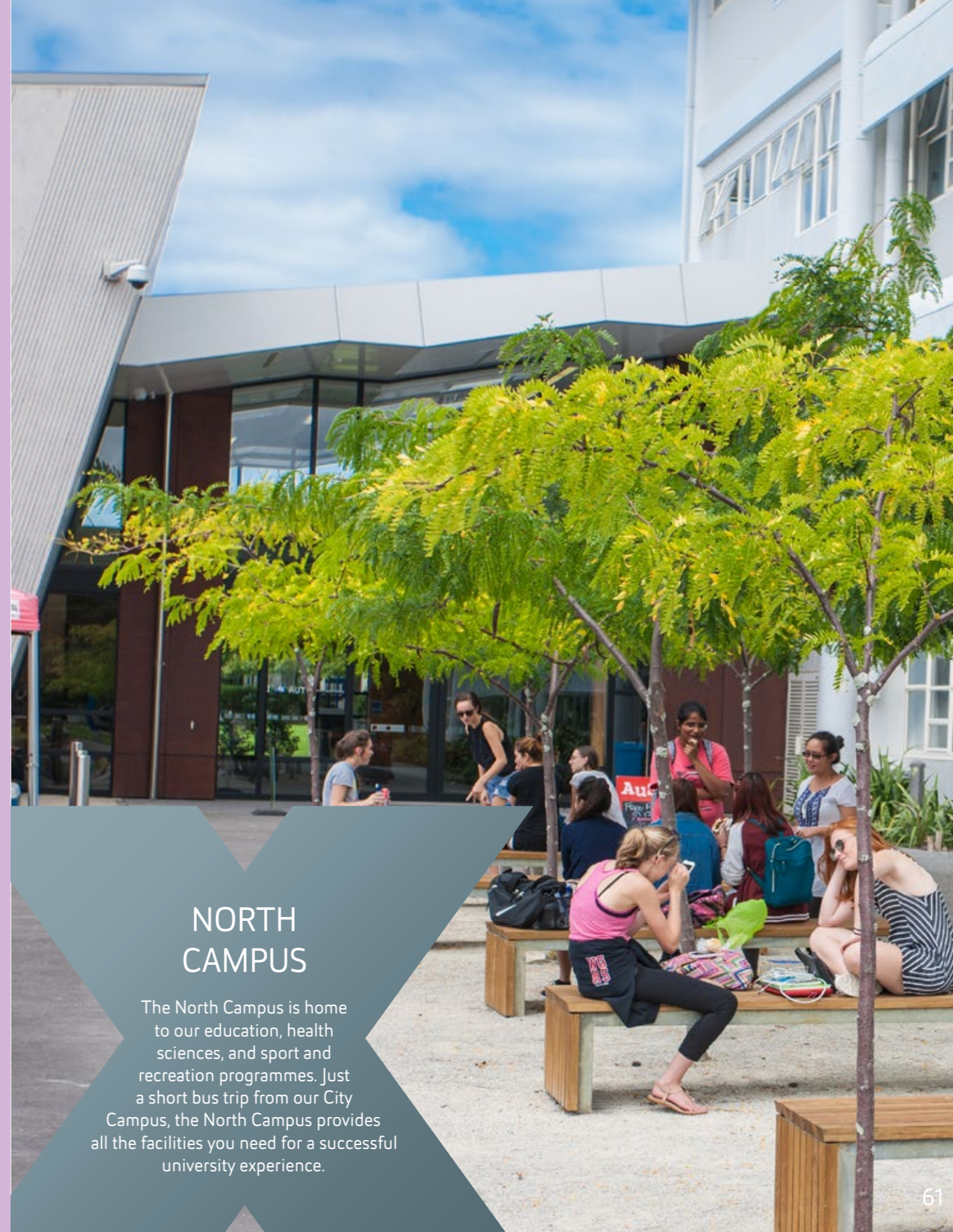
Campus City

Starts 1 Feb, 1 May, 1 July &  
1 Oct 2025



“The Master of Gastronomy is an amazing programme to broaden your gastronomic knowledge and network within Aotearoa’s food community. The course topics and assessments have been engaging and challenging. Our programme has many international students, which gives class discussions a truly global perspective. AUT has a wealth of resources. I regularly check in with my international student advisor and my lecturers. Each semester, I’ve reviewed potential assessment topics with my lecturers and brainstormed with my classmates. I’ve also attended several AUT-sponsored social events to destress and connect with my peers. The field trips and guest lecturers also connect us to a network of chefs, writers, growers, producers and educators who represent the vibrant and diverse food industry of Aotearoa.”

**Dianne Ma**  
Master of Gastronomy student

**NORTH CAMPUS**

The North Campus is home to our education, health sciences, and sport and recreation programmes. Just a short bus trip from our City Campus, the North Campus provides all the facilities you need for a successful university experience.



# LANGUAGE & CULTURE

Our language and culture programmes are taught by academic staff who are passionate about their subject areas and draw on their own experience and research to inform their teaching. When you study with us, you'll come to understand the importance of communicating successfully in both local and global environments, and the key role that culture plays. Our courses cover language in its widest sense - from creative writing, and translation and interpreting, to discourse analysis and the importance of intercultural competencies. But no matter what you study, you'll have many opportunities to apply what you've learnt in real-life situations and gain valuable experience for your future career.



Learn from award-winning published authors and screenwriters



Huge opportunities for workplace experience and international study exchanges



EMPLOYABILITY  
QS STARS 2023-25

Scan this QR code for details about courses, where your study could lead and stories about our great graduates and students.



## UNDERGRADUATE STUDY

**Certificate in Arts**

**Duration** ½ year full-time,  
part-time available

**Campus** City

**Starts** 3 Mar & 21 Jul 2025

**Diploma in Arts**

**Duration** 1 year full-time,  
part-time available

**Campus** City

**Starts** 3 Mar & 21 Jul 2025

**Bachelor of Arts**

- Creative Writing
- International Studies
- Interpreting
- New Zealand Sign Language and Deaf Studies
- New Zealand Sign Language – English Interpreting

**Duration** 3 years full-time,  
part-time available

**Campus** City

**Starts** 3 Mar & 21 Jul 2025

**Graduate Certificate in Arts**

**Duration** ½ year full-time,  
part-time available

**Campus** City

**Starts** 3 Mar & 21 Jul 2025

**Graduate Diploma in Arts**

**Duration** 1 year full-time,  
part-time available

**Campus** City

**Starts** 3 Mar & 21 Jul 2025

**Bachelor of Arts & Bachelor of Business joint programme**

**Duration** 4 years full-time,  
part-time available

**Campus** City<sup>1</sup>

**Starts** 3 Mar & 21 Jul 2025

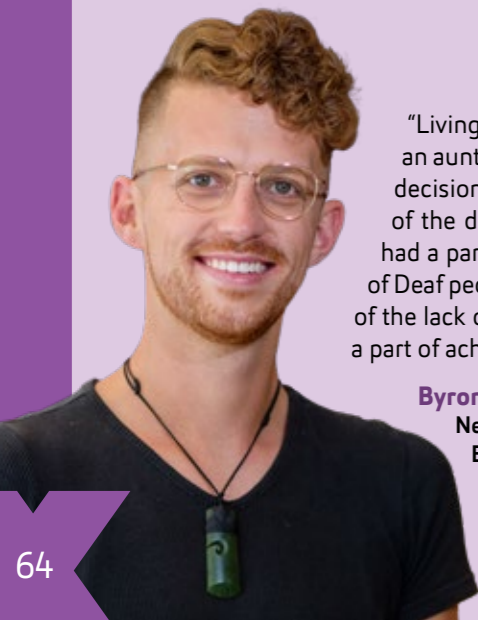
**Bachelor of Arts & Bachelor of Computer and Information Sciences joint programme**

**Duration** 4 years full-time,  
part-time available

**Campus** City

**Starts** 3 Mar & 21 Jul 2025

1. Business courses also available at the South Campus



“Living with a Deaf mother, as well as having a Deaf uncle and grandparents, and an aunt who is an NZSL interpreter have definitely been guiding influences in the decision to become an interpreter. As a CODA, I already had some understanding of the day-to-day injustices Deaf individuals face. However, one lecture at AUT had a particularly powerful impact on me. It was a presentation on the experience of Deaf people in New Zealand’s criminal justice system. Never before had the extent of the lack of equality for Deaf people been so clear to me. It inspired me to become a part of achieving a better, fairer and more equal life experience for Deaf people.”

**Byron Gibbons**  
New Zealand Sign Language Interpreter, Wellington  
Bachelor of Arts in New Zealand Sign Language – English Interpreting

## POSTGRADUATE STUDY

**Master of Philosophy**

**Duration** 1 year full-time,  
part-time available

**Campus** City

**Starts** 1 Feb, 1 May, 1 July &  
1 Oct 2025

**Doctor of Philosophy**

**Duration** 3–6 years

**Campus** City

**Starts** 1 Feb, 1 May, 1 July &  
1 Oct 2025

**WORLD-LEADING RESEARCH**

We pride ourselves on delivering ground-breaking research across the field of language and culture. Our academic staff are known for their expertise across the field of linguistics, and have been involved in a wide range of research collaborations.

“As an interpreter, I very much enjoy working with people – meeting new people, being of assistance to them and being a cultural liaison because sometimes language is understood, but not the cultural undertones and body language. I was inspired by my AUT lecturers. All of them clearly loved what they did and were so passionate about it. I couldn’t help but become passionate and excited about it all as well. As I had previously been a teacher, I know for a fact that your learning journey depends so much on how well your teacher – or in this case, your lecturer – encourages and helps you.”

**Amelia Rose Lingbu**  
Freelance Interpreter and Translator  
Graduate Certificate in Arts in Interpreting



# LAW

As an AUT law student, you'll join the most diverse law school in the country where you'll study alongside classmates from different backgrounds, countries and of a variety of ages. You'll be enrolled in a highly respected and versatile degree that will prepare you for a career in law or a wide range of other areas where you can really make a difference. Our programmes are designed to maximise your career opportunities, and have been developed in close consultation with the legal profession. AUT law graduates are pursuing careers in top law firms, the public sector, community organisations and other employers.



Strong connections with the legal profession



Learn from leading researchers



Collaborative and interactive classes

Scan this QR code for details about courses, where your study could lead and stories about our great graduates and students.



## UNDERGRADUATE STUDY

## Certificate in Legal Studies

**Duration** ½ year full-time,  
part-time available

**Campus** City & South

**Starts** 3 Mar 2025

## Bachelor of Laws

**Duration** 4 years full-time,  
part-time available

**Campus** City & South

**Starts** 3 Mar 2025

## POSTGRADUATE STUDY

## Bachelor of Laws (Honours)

**Duration** 4½ years full-time

**Campus** City

**Starts** 3 Mar 2025

## Master of Laws

**Duration** 1 year full-time,  
part-time available

**Campus** City

**Starts** 3 Mar & 21 Jul 2025

## Doctor of Philosophy

**Duration** 3–6 years

**Campus** City

**Starts** 1 Feb, 1 May, 1 Aug &  
1 Nov 2025

## Postgraduate Certificate in Law

**Duration** ½ year full-time,  
part-time available

**Campus** City

**Starts** 3 Mar & 21 Jul 2025

## Master of Philosophy

**Duration** 1 year full-time,  
part-time available

**Campus** City

**Starts** 1 Feb, 1 May, 1 Aug &  
1 Nov 2025

## WORLD-LEADING RESEARCH

Our dedicated research centres ensure that we're at the forefront of developments in the legal profession. The AUT Centre for Non-Adversarial Justice aims to identify and promote various models of justice under the broad banner of non-adversarial justice. The AUT Centre for Private Law facilitates research and debate across the entire spectrum of private law including tort law, contract law, the law of unjust enrichment, property law, equity and private international law. The AUT Centre for Indigenous Rights and Law aims to raise the visibility of legal rights, issues and customary law relevant to the native peoples of Aotearoa New Zealand and the Asia Pacific region.



"AUT has a very community and whānau-oriented approach to students and their learning journey. You can connect directly with your lecturers, journey together with other likeminded students and share knowledge with each other without being judged. As a Pacific person, I've found that AUT provides a platform with a diverse and inclusive focus. That is very helpful to those students who are desperate to break negative historical cycles that affect them and their community. From a mature student point of view, AUT is welcoming to adult students who want to pursue a different area of profession. And that makes AUT my preferred choice of university to study law."

**Sauniuni Seleni**  
Senior Associate – Commercial, Bank of New Zealand  
Bachelor of Laws



## SOUTH CAMPUS

Located in the heart of Manukau, our South Campus is a unique response to our South Auckland community. We offer a smaller, family environment to help students transition to university. We work closely with the communities in the local area – including District Health Boards, schools, the legal sector and cultural organisations – to offer additional activities that enhance student life and contribute to the South Auckland region. You can choose from a wide range of programmes at all levels of study, with the convenience of a campus located close to home.

# MĀORI & INDIGENOUS DEVELOPMENT (TE ARA POUTAMA)

Study with us and you'll join New Zealand's most diverse and vibrant university, and develop the skills for rewarding careers in a wide range of industries and professions. At Te Ara Poutama - AUT's Faculty of Māori and Indigenous Development - you'll learn in a supportive whānau environment with staff who are passionate about seeing you succeed, at university and beyond. Grounded in te ao Māori, our qualifications will prepare you to contribute in diverse ways in media, business, government, community and iwi organisations. You'll graduate with a qualification that is widely regarded, and with valuable experiences and industry connections for your future career.



Supportive whānau  
environment



State-of-the-art  
technology



Nationally and  
internationally  
recognised lecturers

Scan this QR code  
for details about courses,  
where your study could lead  
and stories about our great  
graduates and students.



## UNDERGRADUATE STUDY

<p><b>Certificate in Arts</b></p> <p><b>Duration</b> ½ year full-time, part-time available</p> <p><b>Campus</b> City</p> <p><b>Starts</b> 3 Mar &amp; 21 Jul 2025</p>	<p><b>Bachelor of Arts &amp; Bachelor of Business conjoint programme</b></p> <p><b>Duration</b> 4 years full-time, part-time available</p> <p><b>Campus</b> City<sup>1</sup></p> <p><b>Starts</b> 3 Mar &amp; 21 Jul 2025</p>	<p><b>Graduate Certificate in Arts</b></p> <p><b>Duration</b> ½ year full-time, part-time available</p> <p><b>Campus</b> City</p> <p><b>Starts</b> 3 Mar &amp; 21 Jul 2025</p>
<p><b>Diploma in Arts</b></p> <p><b>Duration</b> 1 year full-time, part-time available</p> <p><b>Campus</b> City</p> <p><b>Starts</b> 3 Mar &amp; 21 Jul 2025</p>	<p><b>Bachelor of Arts &amp; Bachelor of Computer and Information Sciences conjoint programme</b></p> <p><b>Duration</b> 4 years full-time, part-time available</p> <p><b>Campus</b> City</p> <p><b>Starts</b> 3 Mar &amp; 21 Jul 2025</p>	<p><b>Graduate Diploma in Arts</b></p> <p><b>Duration</b> 1 year full-time, part-time available</p> <p><b>Campus</b> City</p> <p><b>Starts</b> 3 Mar &amp; 21 Jul 2025</p>
<p><b>Bachelor of Arts</b></p> <ul style="list-style-type: none"> <li>• History</li> <li>• Māori Development</li> <li>• Māori Media</li> </ul> <p><b>Duration</b> 3 years full-time, part-time available</p> <p><b>Campus</b> City</p> <p><b>Starts</b> 3 Mar &amp; 21 Jul 2025</p>		

1. Business courses also offered at the South Campus.

## POSTGRADUATE STUDY

<p><b>Postgraduate Certificate in Arts</b></p> <p><b>Duration</b> ½ year full-time, part-time available</p> <p><b>Campus</b> City</p> <p><b>Starts</b> 3 Mar &amp; 21 Jul 2025</p>	<p><b>Postgraduate Diploma in Arts</b></p> <p><b>Duration</b> 1 year full-time, part-time available</p> <p><b>Campus</b> City</p> <p><b>Starts</b> 3 Mar &amp; 21 Jul 2025</p>	<p><b>Master of Philosophy</b></p> <p><b>Duration</b> 1 year full-time, part-time available</p> <p><b>Campus</b> City</p> <p><b>Starts</b> 1 Feb, 1 May, 1 July &amp; 1 Oct 2025</p>
	<p><b>Master of Arts</b></p> <ul style="list-style-type: none"> <li>• Māori Development</li> </ul> <p><b>Duration</b> 2 years full-time, part-time available</p> <p><b>Campus</b> City</p> <p><b>Starts</b> 3 Mar &amp; 21 Jul 2025</p>	<p><b>Doctor of Philosophy</b></p> <p><b>Duration</b> 3-6 years</p> <p><b>Campus</b> City</p> <p><b>Starts</b> 1 Feb, 1 May, 1 July &amp; 1 Oct 2025</p>

### WORLD-LEADING RESEARCH

We deliver leading research in a number of areas within Māori and indigenous development, working closely with academics and organisations from around New Zealand and the world. As a postgraduate student you work closely with academic staff who are known as experts in their field – from Māori business and entrepreneurship to Māori media and from Mātauranga Māori to New Zealand history and Te Tiriti o Waitangi.



“I did this degree because I wanted to learn new skills to be able to help my people, learn more about my culture and be able to use my biggest strengths as Māori in my personal and professional life. The atmosphere at AUT felt welcoming and colourful, and from the first day the staff and students were so supportive. Coming from a small town and a small school in the Hawke’s Bay, and then moving and studying in the Auckland CBD was so interesting, and I made some great friends while I was at AUT.”

**Maia Hemara-Tylden**  
*Ngāpuhi, Ngāti Rangī*  
**Administrator, Ngāpuhi Iwi Social Services**  
**Bachelor of Arts in Māori Development**

# SCIENCE

Environmental sustainability, innovative food production, geospatial science and chemical synthesis techniques are some of the key ingredients that will shape the future world we live in. Study science with AUT and you'll be prepared for a rewarding career in a wide range of industries and professions. Our collaboration with industry means that your study will be highly relevant to your career. Our research focuses on scientific issues of regional and global significance – research that makes a difference to the world we live in. AUT science alumni contribute to scientific innovation and world-leading research in many fields, and are highly sought-after by employers around the world.



Study science majors designed to solve the world's problems



Get out of the classroom with science field trips, labs and practical sessions



Nationally and internationally recognised lecturers

Scan this QR code for details about courses, where your study could lead and stories about our great graduates and students.



## UNDERGRADUATE STUDY

**Certificate in Applied Science**

**Duration** 1 year full-time, part-time available

**Campus** City

**Starts** 3 Mar & 21 Jul 2025

**Diploma in Applied Science**

**Duration** 1 year full-time, part-time available

**Campus** City

**Starts** 3 Mar & 21 Jul 2025

**Graduate Certificate in Science**

**Duration** ½ year full-time, part-time available

**Campus** City

**Starts** 3 Mar & 21 Jul 2025

**Graduate Diploma in Science**

**Duration** 1 year full-time, part-time available

**Campus** City

**Starts** 3 Mar & 21 Jul 2025

**Bachelor of Science**

- Analytics
- Biological Science
- Biomedical Science
- Chemistry
- Environmental Science
- Food Science
- Marine Science
- Mathematical Modelling and Computation

**Duration** 3 years full-time, part-time available

**Campus** City

**Starts** 3 Mar & 21 Jul 2025

**Bachelor of Medical Laboratory Science**

**Duration** 4 years full-time, part-time available

**Campus** City

**Starts** 3 Mar 2025

## POSTGRADUATE STUDY

**Bachelor of Science (Honours)**

**Duration** 1 year full-time, part-time available

**Campus** City

**Starts** 3 Mar 2025

**Postgraduate Certificate in Science**

**Duration** ½ year full-time, part-time available

**Campus** City

**Starts** 3 Mar & 21 Jul 2025

**Postgraduate Diploma in Science**

- Biomedical Science
- Chemistry
- Environmental Science
- Food Science
- Geospatial Science
- Marine Science
- Microbiology
- Molecular Genetics

**Duration** 1 year full-time, part-time available

**Campus** City

**Starts** 3 Mar & 21 Jul 2025

**Master of Science**

- Biomedical Science
- Chemistry
- Environmental Science
- Food Science
- Geospatial Science
- Marine Science
- Microbiology
- Molecular Genetics

**Duration** 1 year full-time, part-time available

**Campus** City

**Starts** 3 Mar & 21 Jul 2025

**Master of Science (Research)**

- Biomedical Science
- Chemistry
- Environmental Science
- Food Science
- Geospatial Science
- Marine Science
- Microbiology
- Molecular Genetics

**Duration** 2 years full-time, part-time available

**Campus** City

**Starts** 3 Mar & 21 Jul 2025

**Postgraduate Certificate in Medical Laboratory Science**

**Duration** ½ year full-time, part-time available

**Campus** City

**Starts** 3 Mar & 21 Jul 2025

**Postgraduate Diploma in Medical Laboratory Science**

**Duration** 1 year full-time, part-time available

**Campus** City

**Starts** 3 Mar & 21 Jul 2025

**Master of Medical Laboratory Science**

**Duration** 2 years full-time, part-time available

**Campus** City

**Starts** 3 Mar & 21 Jul 2025

**Master of Philosophy**

**Duration** 1 year full-time, part-time available

**Campus** City

**Starts** 1 Feb, 1 May, 1 July & 1 Oct 2025

**Doctor of Philosophy**

**Duration** 3–6 years

**Campus** City

**Starts** 1 Feb, 1 May, 1 July & 1 Oct 2025

**WORLD-LEADING RESEARCH**

Our globally renowned researchers are experts in areas as diverse as applied ecology, chemistry, biomedical science and food science. You have access to top facilities and equipment for your research, like aerial drones and marine research vessels. Our outstanding laboratories include the AUT Roche Diagnostics Laboratory – which has state-of-the-art medical and biomedical testing equipment, and is the only university lab of its kind in New Zealand.



"I always had a connection to the ocean. At AUT, I loved being surrounded by likeminded people who are willing to help others, and the field trips and hands-on experience were so enjoyable. Hearing about the experiences of my lecturers and my tutor really opened my eyes to how many opportunities and avenues there are in the environment and marine space, not only in New Zealand but also overseas. Their teachings were straightforward and direct, which motivated me to do my best. They really nurtured and cared about our education, and encouraged me to showcase my identity in every journey."

**Shaye Va**  
Sustainability Advisor, Watercare Services Limited  
Bachelor of Science in Environmental Sciences and Marine Biology



# SOCIAL SCIENCES & PUBLIC POLICY

If you want a rewarding career where you can make a difference, studying social sciences and public policy is the perfect start. At AUT you'll study society at many levels - from individuals, families and communities, governments and cultures through to our global system. Our academic staff are research-active and globally known as experts in areas as diverse as economics, human rights, gender equality, ethnicity and race, identity, community development, social structure, social data analytics, and criminology and police. Study with us and you'll gain an in-depth understanding about how and why people think and behave as they do; skills that are essential no matter where your career takes you.



Research undertaken with national and local government



Huge opportunities for workplace experience and international study exchanges



Nationally and internationally recognised lecturers

Scan this QR code for details about courses, where your study could lead and stories about our great graduates and students.



## UNDERGRADUATE STUDY

Certificate in Arts	
Duration	½ year full-time, part-time available
Campus	City
Starts	3 Mar & 21 Jul 2025

Diploma in Arts	
Duration	1 year full-time, part-time available
Campus	City
Starts	3 Mar & 21 Jul 2025

Bachelor of Arts	
	<ul style="list-style-type: none"> <li>• Criminology and Criminal Justice</li> <li>• Economics</li> <li>• Psychology</li> <li>• Social Sciences</li> </ul>
Duration	3 years full-time, part-time available
Campus	City <sup>1</sup>
Starts	3 Mar & 21 Jul 2025

Bachelor of Arts & Bachelor of Business conjoint programme	
Duration	4 years full-time, part-time available
Campus	City <sup>2</sup>
Starts	3 Mar & 21 Jul 2025

Bachelor of Arts & Bachelor of Computer and Information Sciences conjoint programme	
Duration	4 years full-time, part-time available
Campus	City
Starts	3 Mar & 21 Jul 2025

Graduate Certificate in Arts	
Duration	½ year full-time, part-time available
Campus	City & North
Starts	3 Mar & 21 Jul 2025

Graduate Diploma in Arts	
Duration	1 year full-time, part-time available
Campus	City & North
Starts	3 Mar & 21 Jul 2025

1. Some psychology courses are offered at the North Campus
2. Business courses also available at the South Campus
3. Students in criminology and criminal justice can normally only start on 24 Feb. Students in psychology can normally only start on 3 Mar

## POSTGRADUATE STUDY

Bachelor of Arts (Honours)	
Duration	1 year full-time, part-time available
Campus	City
Starts	24 Feb, 3 Mar & 15 Jul 2025 <sup>3</sup>

Postgraduate Certificate in Arts	
Duration	½ year full-time, part-time available
Campus	City
Starts	3 Mar & 21 Jul 2025

Master of Arts	
Duration	2 years full-time, part-time available
Campus	City
Starts	3 Mar & 21 Jul 2025

Postgraduate Diploma in Criminology and Criminal Justice	
Duration	1 year full-time, part-time available
Campus	City
Starts	TBC

Master of Criminology and Criminal Justice	
Duration	1½ years full-time, part-time available
Campus	City
Starts	TBC

Postgraduate Certificate in Human Rights	
Duration	½ year full-time, part-time available
Campus	City
Starts	TBC

Postgraduate Diploma in Human Rights	
Duration	1 year full-time, part-time available
Campus	City
Starts	TBC

Master of Human Rights	
Duration	1 year full-time, part-time available
Campus	City
Starts	TBC

Master of Philosophy	
Duration	1 year full-time, part-time available
Campus	City
Starts	1 Feb, 1 May, 1 July & 1 Oct 2025

Doctor of Philosophy	
Duration	3–6 years
Campus	City
Starts	1 Feb, 1 May, 1 July & 1 Oct 2025



"I've found that the people at AUT are down-to-earth and friendly, which has enabled me to make friendships that have helped me through my years of study. Additionally, the opportunities for study that AUT offers have helped me understand psychology and the brain in a way I wouldn't have been able to without access to AUT's resources. I enjoy learning and have a wide array of interests, from history to linguistics. For me, it's important to be educated in the areas you enjoy to be able to understand and enjoy the topics to their fullest extent. I like that the Bachelor of Arts enables you to acquire knowledge that can enhance your intelligence and understanding of your interests."

**Yousif Bahr Aliloom**  
3rd-year student, Bachelor of Arts in Psychology with a minor in Management and Leadership

## WORLD-LEADING RESEARCH

We believe in high-quality research that has impact, and our world-class researchers have expertise across social sciences and social justice – from human rights and gender equality, to psychology, criminology and community development. As a postgraduate student, you work closely with some of New Zealand's most widely known experts in social sciences and social justice. Our experienced lecturers constantly draw on their own international and New Zealand experience and research to inform their teaching. You could also benefit from the expertise of the Centre for Social Data Analytics, which applies strong data science to linked data, undertaking research that tells us new things about the human experience.

# SPORT & RECREATION

Ranked in the top 50 in the world by QS and the Shanghai Ranking, AUT offers New Zealand's most advanced sports qualifications. As a sport and recreation student, you'll learn at our state-of-the-art facilities, including AUT Millennium, a high-performance sport and health facility. During your study with us, you'll be supported by research-active academic staff who are committed to helping you achieve your highest potential. Our world-class researchers work with leading organisations and athletes to challenge current practices. Many of our staff have been elite athletes, coaches and adventurers, and they all love what they do.



**TOP 50**  
WORLDWIDE  
for Sport



One of the best work  
placement programmes  
in New Zealand

 **AUT MILLENNIUM**

Home of NZ's leading  
sport and fitness facility,  
AUT Millennium

Scan this QR code  
for details about courses,  
where your study could lead  
and stories about our great  
graduates and students.



## UNDERGRADUATE STUDY

**Certificate in Sport and Recreation**

Duration	½ year full-time, part-time available
Campus	North & South
Starts	3 Mar & 21 Jul 2025

**Bachelor of Sport and Recreation**

- Standard Pathway (N) (S)
- Coaching (N)
- Exercise Science and Nutrition (N)
- Health and Physical Education (N)
- Management (N) (S)
- Outdoor Education (N)
- Sport and Exercise Science (N)

Duration	3 years full-time, part-time available
Campus	North & South
Starts	3 Mar & 21 Jul 2025

**Graduate Certificate in Sport and Exercise**

Duration	½ year full-time, part-time available
Campus	North & South
Starts	3 Mar & 21 Jul 2025

**Graduate Diploma in Sport and Exercise**

Duration	1 year full-time, part-time available
Campus	North & South
Starts	3 Mar & 21 Jul 2025

## KEY

- (N) North Campus  
(S) South Campus

## WORLD-LEADING RESEARCH

AUT is globally known for its leading sport and exercise science research. Our research covers sport and activity-related areas, as well as performance, nutrition, coaching and human potential. We're proud to be the home of New Zealand's top sport and fitness facility, AUT Millennium, which helps our communities be healthy and our top athletes become champions. Based at AUT Millennium, the Sports Performance Research Institute New Zealand (SPRINZ) is New Zealand's number one sports research institute. Its world-class laboratory facilities and international reputation attract many overseas researchers and students to New Zealand, and SPRINZ research has received funding from organisations like the Health Research Council, Sport New Zealand and the World Health Organization.



"I grew up in England but found the university courses there to be too clinical. On a whim I googled universities in Aotearoa and stumbled across AUT. I loved their holistic approach to sport and the diverse options, so when I saw the modules on nutrition I was sold. I loved the kinaesthetic side of the degree, with the group hikes, waka and whitewater rafting, exercise physiology workshops and visiting the clinics at AUT Millennium. I found these experiences invaluable for my personal and professional development."

**Heather Reed**

*Ngāti Kahungunu ki Wairarapa*

**Co-Founder, Knoxfit-Hauora**

**Bachelor of Sport and Recreation in Sport and Exercise Science & Exercise Science and Nutrition**

## POSTGRADUATE STUDY

**Bachelor of Sport and Recreation (Honours)**

Duration	1 year full-time, part-time available
Campus	North
Starts	3 Mar & 21 Jul 2025

**Postgraduate Certificate in Sport, Exercise and Health**

Duration	½ year full-time, part-time available
Campus	North & online study
Starts	3 Mar & 21 Jul 2025

**Master of Sport, Exercise and Health**

Duration	1½ years full-time, part-time available
Campus	North & online study
Starts	3 Mar & 21 Jul 2025

**Master of Philosophy**

Duration	1 year full-time, part-time available
Campus	North & South
Starts	1 Feb, 1 May, 1 July & 1 Oct 2025

**Doctor of Philosophy**

Duration	3-6 years
Campus	North & South
Starts	1 Feb, 1 May, 1 July & 1 Oct 2025

"I've been with AUT since my undergraduate degree, having completed my Bachelor of Sport and Recreation, then going on to doing my master's degree, before deciding to pursue a PhD. AUT has great research facilities and connections in the sport and exercise industry, which open up plenty of opportunities. The student culture at SPRINZ is welcoming and supportive, with regular workshops aimed at developing academic and research skills, writing retreats, as well as social sports events. The support from my supervisors has been amazing – just being able to draw on their experience and having their support was very important."

**Jasper Wong**

**Doctor of Philosophy candidate**

**Master of Sport and Exercise**

**Bachelor of Sport and Recreation in Sport and Exercise Science**



# He pēhea te tono HOW TO APPLY

Below is the step-by-step guide to the application process.  
For more information visit [aut.ac.nz/apply](https://aut.ac.nz/apply)

## 1 APPLY EARLY

Places are limited. Submit your application well before the semester starts.

APPLYING FOR 2025

- Semester 1  
– apply by 2 December 2024
- Semester 2  
– apply by 5 May 2025

### Applying for the Master of Philosophy (MPhil) and Doctor of Philosophy (PhD)

Feb start date: apply by 1 Nov 2024

May start date: apply by 1 Feb 2025

July start date: apply by 1 April 2025

October start date: apply by 1 July 2025

## 2 COMPLETE THE APPLICATION FORM

- Apply online
- Indicate your programme(s) of choice and major (if known)

International students can also apply using an AUT approved international agent. For a list of AUT registered agents visit [aut.ac.nz/international-agents](https://aut.ac.nz/international-agents)

## SUBMIT YOUR APPLICATION

### WE ACKNOWLEDGE YOUR APPLICATION

- We will send you an acknowledgment email, which explains how to check the status of your application
- We will contact you if we need more information

## WE ASSESS YOUR APPLICATION

- We assess your application to ensure you have met the entry criteria for the programme(s) you are applying for
- We consider your academic history and relevant experience to ensure you can succeed in your programme
- We let you know if your application has been successful

## POSSIBLE OUTCOMES

**CONFIRMED** We would like to offer you a place to study at AUT

**PROVISIONAL** You have met some of the criteria for entry to your chosen programme of study and we would like to offer you a provisional place to study at AUT. If you don't meet the rest of the requirements, then this offer will be withdrawn

**CONDITIONAL** You have to meet the conditions and approvals listed in your conditional offer to be able to secure a formal offer of place

**DECLINED** If you don't meet the entry requirements or all places are taken, we may offer you an alternative programme

## 3 ACCEPT YOUR OFFER

It's important that you respond as soon as possible, particularly if you've been offered a place in a programme with limited places.

Once you've accepted your offer of place, we'll let you know how to enrol in the courses for your programme, and you can start to get excited about joining AUT.

Ready to apply?  
[apply.aut.ac.nz](https://apply.aut.ac.nz)

# Ngā hiahiatanga kia uru mai ENTRY REQUIREMENTS

All applicants need to meet AUT's minimum entry requirements. Because of competition for places, you may need to have more than the minimum entry requirements for admission to some programmes. Entry requirements for each programme you can study at AUT are listed on the AUT website. The information on this page serves as a guide only.

For more information and specific entry requirements for each programme visit [aut.ac.nz](http://aut.ac.nz)

## University admission to AUT bachelor's degrees

### For New Zealand citizens and residents and international students studying in a high school in New Zealand

To gain admission to bachelor's degrees, you must have met the requirements for University Entrance plus any specified admission requirements for a programme, such as specific subjects, portfolios and interviews.

For more information on entry requirements, including entry requirements for international students visit [aut.ac.nz/entryrequirements](http://aut.ac.nz/entryrequirements)

### Admission categories

You may be granted University Entrance under one of the following categories:

- NCEA University Entrance
- Ad Eundem Statum admission (at an equivalent level) – this includes Cambridge International Examinations (CIE) and International Baccalaureate Diploma Programme (IB)
- Discretionary Entrance
- Special Admission

Visit [aut.ac.nz/entryrequirements](http://aut.ac.nz/entryrequirements) to find about more details about these admission categories.

## Certificates and diplomas

Entry requirements for certificates and diplomas vary by programme. You can find specific entry requirements for your chosen programme on our website [aut.ac.nz](http://aut.ac.nz)

## Graduate certificates and graduate diplomas

You generally need to have completed an undergraduate qualification for entry to a graduate certificate or diploma. You can find specific entry requirements for your chosen programme on our website [aut.ac.nz](http://aut.ac.nz)

## Postgraduate programmes

Entry requirements for AUT postgraduate programmes vary. You can find specific entry requirements on the programme page for your chosen programme on our website [aut.ac.nz](http://aut.ac.nz)

Minimum entry requirements are generally a successfully completed bachelor's degree in the same area of study from a recognised university. You may also be required to provide evidence of relevant work/research experience.

If you're planning to undertake a thesis, a research proposal will also be required.

## Common University Entrance requirements

Where programmes require a specific subject, it is expected that a student will have achieved a minimum of 14 NCEA credits in that subject (or equivalent), unless indicated otherwise. For a list of NCEA approved subjects for University Entrance visit the NZQA website, [nzqa.govt.nz](http://nzqa.govt.nz)

	NCEA	CIE	IB <sup>3</sup>
Overall	<p>Require NCEA level 3 certificate which consists of 80 credits, including at least 60 credits at level 3 or higher. Can include up to 20 credits at level 2. Note: Credits to achieve NCEA level 3 may include unit standards from non-approved subjects.</p> <p><b>Subject credits</b> Total of 42 level 3 credits including:</p> <ul style="list-style-type: none"> <li>• 14 credits from one approved subject</li> <li>• 14 credits from a second approved subject</li> <li>• 14 credits from a third approved subject</li> </ul>	<p>A minimum of 120 points on the New Zealand CAIE Tariff<sup>1</sup> at A or AS level from an approved list (equivalent to NCEA approved subject list). Must include at least three subjects (excluding Thinking Skills) with grades D or above.</p>	<p>IB Diploma with minimum 24 points</p>
Numeracy	<p>At least 10 level 1 (or higher) numeracy credits (can be achieved through a range of subjects)</p>	<p>A minimum grade of D in IGCSE<sup>2</sup> mathematics or any mathematics subject at AS or A level.</p>	<p>Any mathematics subject – IB Group 5</p>
Literacy	<p>Total of 10 level 2 (or higher) literacy credits including:</p> <ul style="list-style-type: none"> <li>• 5 reading credits</li> <li>• 5 writing credits</li> </ul> <p>From specific standards in a range of NZQA English language rich subjects</p>	<p>An E grade or better in any one of AS English Language, English Language and Literature, English Literature or English General Paper.</p>	<p>Literature or language and literature (SL or HL) – IB Group 1, with English as the language</p>

1. NZ Tariff (based on old UCAS Tariff) = system which converts AS and A level grades into points.
2. IGCSE = International General Certificate of Secondary Education.
3. New Zealand residents who have taken IB but have not been awarded the Diploma may apply for discretionary entrance.



# Ngā utu whakauru, ngā karahipi FEES & SCHOLARSHIPS

## Find out what it costs

Cost is an important factor when thinking about university study. Visit our website [aut.ac.nz/fees](https://aut.ac.nz/fees) to get an idea of the approximate tuition fees at AUT, and different options to help you fund your education including scholarships, student loans and allowances.

The 2025 tuition fees will be advertised on [aut.ac.nz/fees](https://aut.ac.nz/fees) as soon as they have been set.

## Free fees for your university study

Eligible domestic students starting tertiary education may be able to receive one year of full-time study fees-free<sup>1</sup>.

To check if you're eligible for fees-free study visit [aut.ac.nz/fees](https://aut.ac.nz/fees)

<sup>1</sup> Domestic students only, not available to international students.

## Scholarships and awards

Scholarships and awards are a great way to fund your university study. There is a wide range of scholarships and awards available to AUT students at all stages of their study. Visit the scholarships website for a current list of scholarships offered by AUT and external funders, as well as application forms and closing dates.

You can also contact AUT's Scholarships Office for advice on scholarships, awards and the scholarship application process.

Call +64 9 921 9837 or visit [aut.ac.nz/scholarships](https://aut.ac.nz/scholarships)

## Student loans and allowances<sup>1</sup>

If you're a full-time domestic student, you may qualify for a student loan or allowance. Student loans and allowances are administered and paid by StudyLink. The application process can take some time, so it's a good idea to apply early. You can apply for a student loan or student allowance before your enrolment at AUT is complete.

Call 0800 88 99 00 or visit [studylink.govt.nz](https://studylink.govt.nz)

<sup>1</sup> For domestic students only, not available to international students

## Financial assistance

We know that sometimes things happen and financial stress can impact your academic success. That's why we offer financial support that ranges from offering grocery or fuel vouchers, to helping with that unexpected bill.

## StudyLink website

Visit [studylink.govt.nz](https://studylink.govt.nz) for tools, tips and information to help you plan and understand the costs you will have while studying.

# Ētahi atu kōrero FIND OUT MORE

## Visit our website

To find out more about study at AUT, including more details about our programmes and the courses you could study, entry requirements, and information about academic staff and their areas of expertise visit [aut.ac.nz](https://aut.ac.nz)

## Need some help?

Visit [aut.ac.nz/enquire](https://aut.ac.nz/enquire), ask us your question and we'll call you back. Or you can phone 0800 AUT AUT (0800 288 288) to speak to one of our friendly advisors. We can help with any questions you may have, and you could also book a course counselling session or a campus tour.

## AUT LIVE

Join us at our open day, AUT LIVE, on the City Campus and see everything AUT has to offer to help you make an educated decision about university study.

[aut.ac.nz/live](https://aut.ac.nz/live)





**0800 AUT AUT (0800 288 288)**  
**Auckland University of Technology**  
**[aut.ac.nz](http://aut.ac.nz)**

**Enquire now**  
**[aut.ac.nz/enquire](http://aut.ac.nz/enquire)**

**CITY CAMPUS**  
55 Wellesley Street East, Auckland City, Auckland

**NORTH CAMPUS**  
90 Akoranga Drive, Northcote, Auckland

**SOUTH CAMPUS**  
640 Great South Road, Manukau, Auckland

**Connect with us now:**

